

Wellington Airport

Noise Compliance Reporting

December 2024, January, February 2025

1. Noise Enquiries Received and Response
2. Noise Enquiries Graph
3. Curfew Movements Graph
4. Noise (Ldn) Compliance Graph
5. Monthly Monitoring Reports from Envirosuite Pty Limited

As reported to the
Air Noise Management Committee
10 March 2025

Noise Enquiries Summary *

Date	Time	Suburb	Query	Source / Action	Category
6/12/2024	4:26pm	Korokoro	Complained of a really loud overhead flight.	Explained that the flight complied with CAA and curfew rules. Airport has no control or jurisdiction.	OVR
23/12/2024		Roseneath	Qantas aircraft creating much more noise compared to Air NZ. Wants the airline to address this problem and invest in better technology.	Airport has no jurisdiction over an airline's choice of aircraft, flight schedule or the technology it uses. This is down to the airline itself. If an aircraft is flying in accordance with all CAA rules and regulations and within the normal flying hours for Wellington Airport, suggested contacting the aircraft operator concerned directly. In addition, one of the strategies of WIAL's climate-related disclosures for FY24 is to encourage technology advancements in the aviation sector.	OTH
28/12/2024	12:45am	Lyal Bay	Jetstar aircraft departs at 12:45am. Complainant woken up and believes to be in breach of curfew.	Statutory holiday exception includes the period from 25 December to 2 January. Clarified to complainant.	CUR
29/12/2024			Disturbed by aeroclub aircraft flying over residential areas after 10pm.	Aeroclub sent a reminder to pilots to avoid flying over populous areas during the evening.	OVR
29/12/2024	11:08am	Roseneath	Complained of aeroclub flight over home during the day.	Aeroclub sent a reminder to pilots to avoid flying over populous areas during the evening.	OVR
31/12/2024		Rongotai	Overnight noise from aircraft while no aircraft in the air. Causing disturbance past 2am.	The likely cause of the noise was a LifeFlight helicopter preparing for take-off for a medical emergency in the west area of the airfield. The aircraft departed at 3:51am on 31 December.	OTH
5/02/2025	11:30am	Upper Hutt	Plane continuously flying over Upper Hutt quite low during the day.	Aircraft was a helicopter likely used for land surveying – did not depart or land at Wellington Airport and came from Masterton Aerodrome. Explained this to complainant.	OVR
18/02/2025	9:50pm	Korokoro	Noticed a significant number of low flying flights over Korokoro and the Hutt Valley such as one tonight at 9:50 pm. Asked why an increase has occurred.	Assured complainant there have been no flight path changes resulting in increased flights over this area. The flight in question was a medical emergency aircraft (helicopter CAP01) and explained that the pilot will understandably take the most direct route to the destination.	OVR

* Complaints relating to the new Divergent Missed Approach Flight Path (DMAPS) are recorded in a separate complaints register

GPU - GPU/APU use

MNT - WIAL Maintenance works

ENG - Engine testing

SIN - single noisy aircraft movement

CUR - airport movement during curfew hours

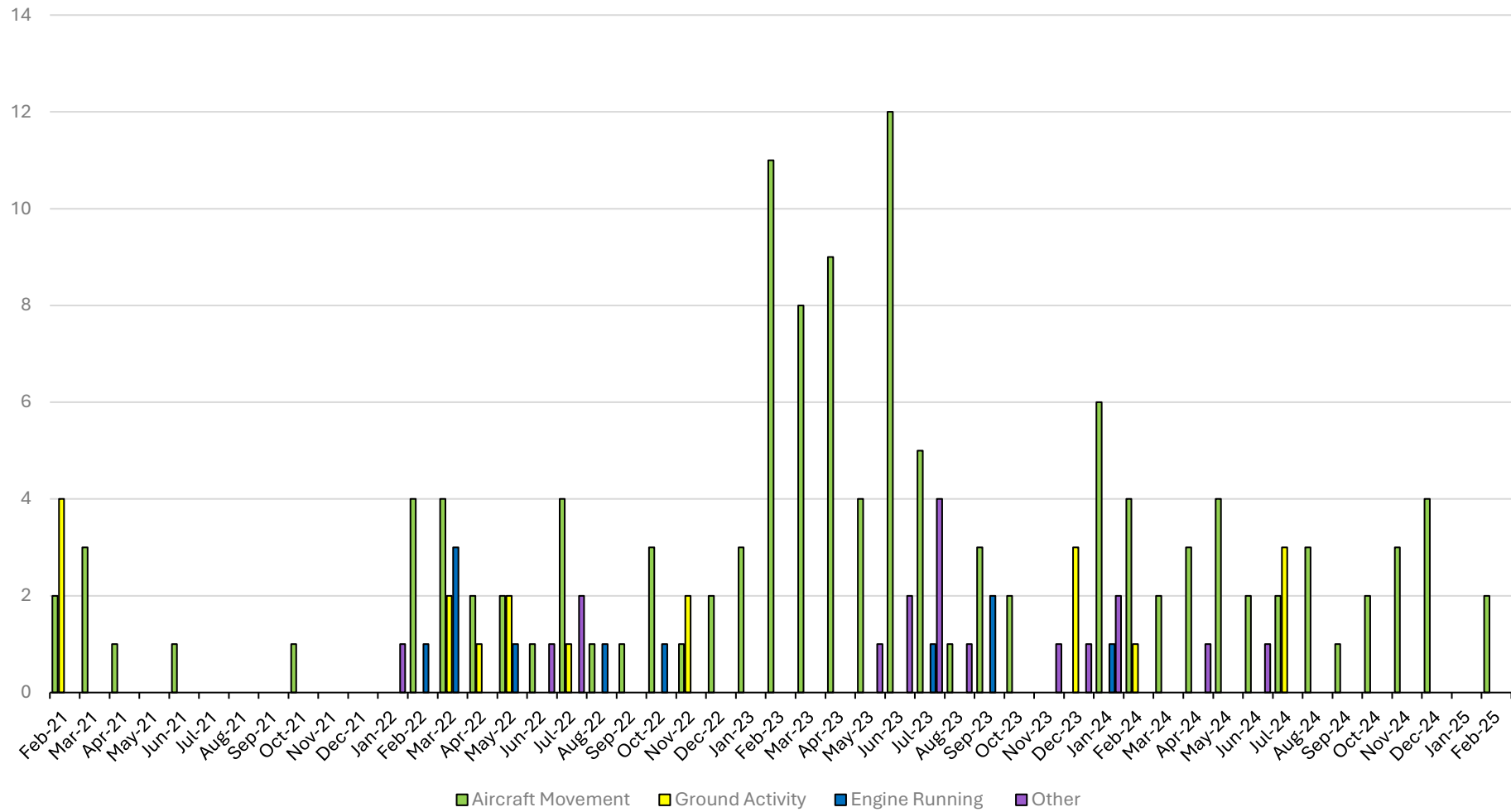
OVR - overflight/holding/circling aircraft

CAA - low flying/safety complaints

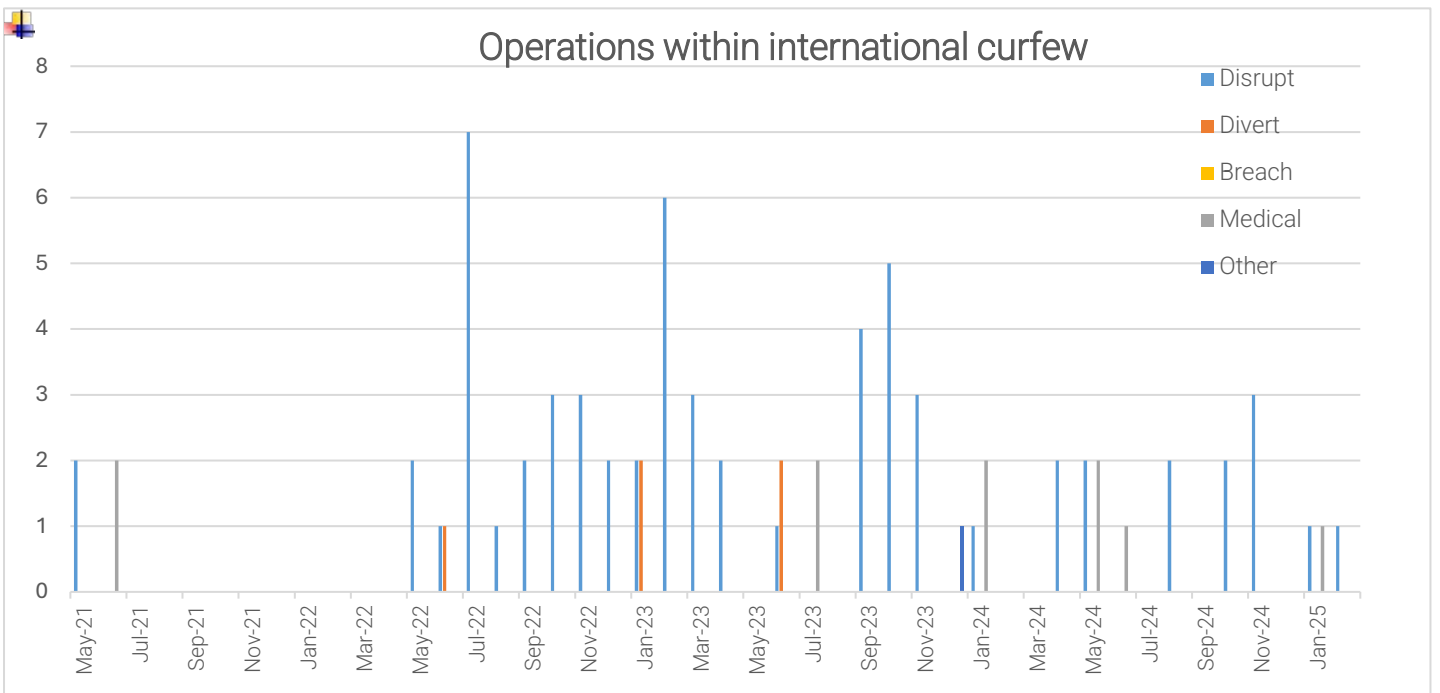
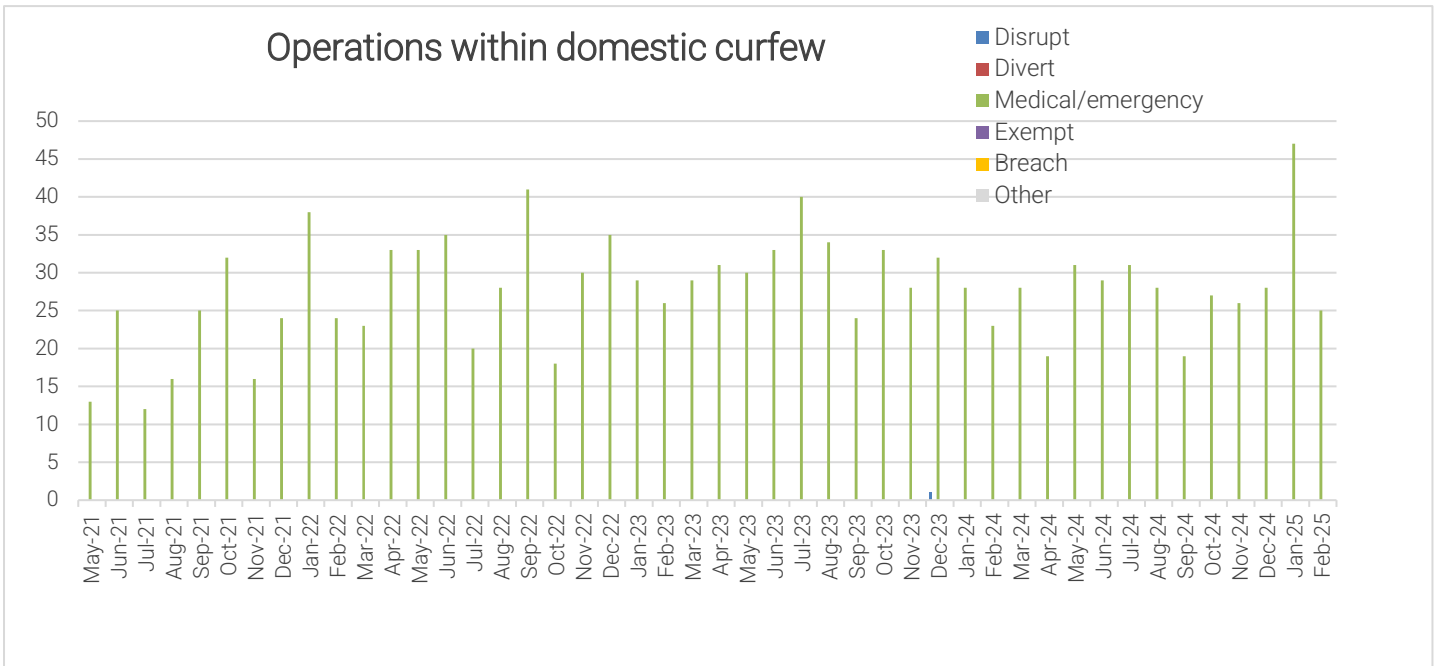
QRY - enquiries about rules etc

OTH - other feedback

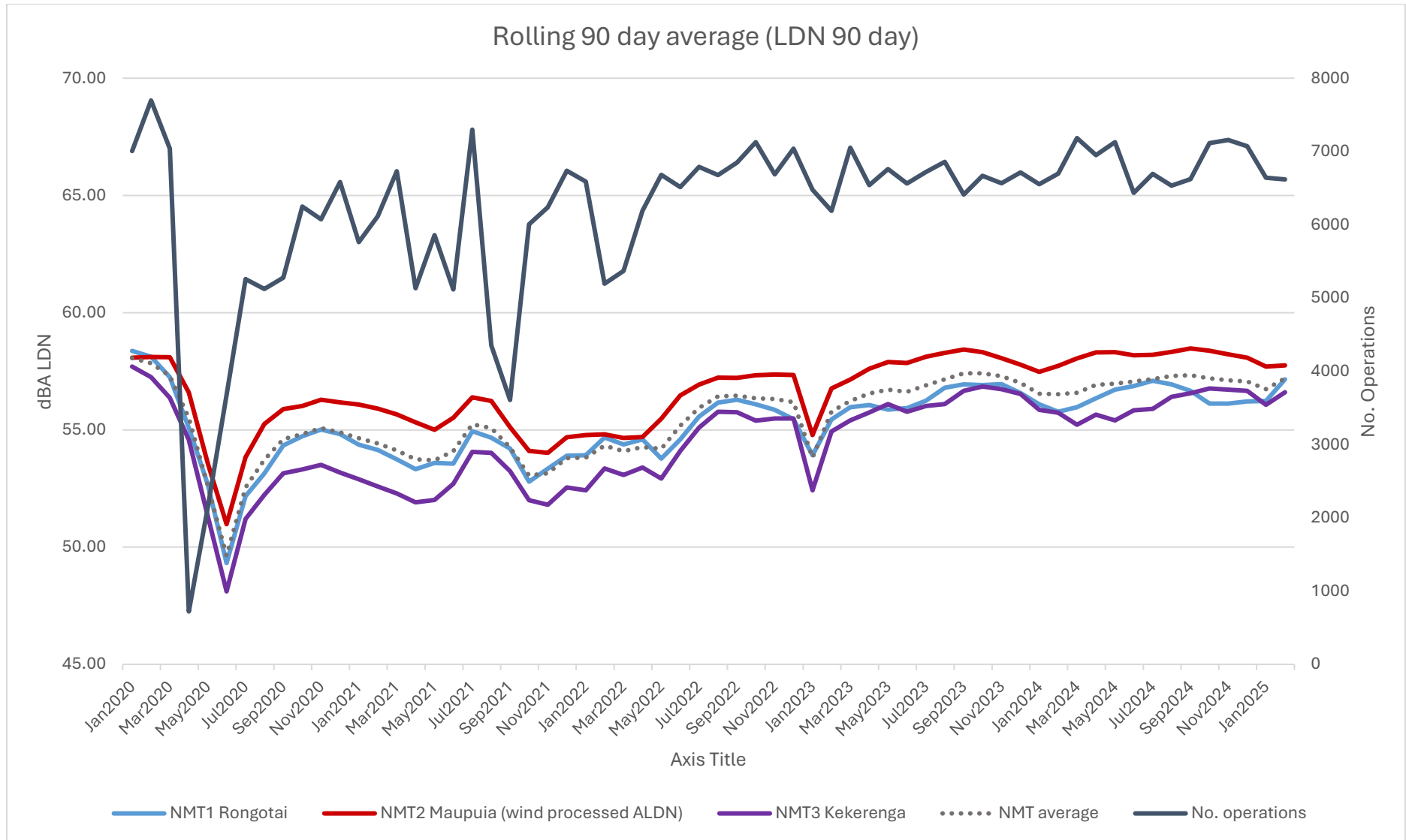
Noise Enquiries to end of February 2025



CURFEW GRAPHS



LDN COMPLIANCE GRAPH (as at February 2025)





WELLINGTON INTERNATIONAL
AIRPORT LIMITED

Managed Noise Service

Monthly Report: Dec 2024

Provided By: Envirosuite
Date: 31 December, 2024



Table of Contents

SUMMARY	3
AIRCRAFT LDN	4
AIRCRAFT OPERATIONS	5
UNCORRELATED AIRCRAFT	7
CALIBRATION REPORT	9

Summary

This report contains the information required by WIAL as part of the Envirosuite Managed Noise Service Agreement. The month of December saw all data collected from all three RMTs.

Wellington International Airport
Managed Noise Service
Monthly Report for Dec 2024

Aircraft LDN

Daily LDN Table
Dec 1, 2024 to Dec 31, 2024

	RMT 1 Rongotai	RMT 2 Maupuia	RMT 3 Kekerenga
01-Dec-24	52.9	58.3	55.8
02-Dec-24	55.7	59.7	57.1
03-Dec-24	56.7	57.6	58.2
04-Dec-24	55.2	59.1	57.1
05-Dec-24	56.9	56.8	58.1
06-Dec-24	56.6	59.9	57.3
07-Dec-24	54.5	59.6	56.5
08-Dec-24	56.6	55.6	58.7
09-Dec-24	54.3	51.4	56.8
10-Dec-24	55.0	59.3	56.1
11-Dec-24	56.4	59.4	57.7
12-Dec-24	53.5	59.6	56.6
13-Dec-24	55.5	59.6	56.6
14-Dec-24	56.8	57.9	59.2
15-Dec-24	53.7	58.2	55.9
16-Dec-24	57.3	59.7	56.1
17-Dec-24	58.1	56.9	56.1
18-Dec-24	57.4	55.7	53.3
19-Dec-24	58.7	59.0	55.4
20-Dec-24	57.7	57.4	56.4
21-Dec-24	54.4	59.1	55.9
22-Dec-24	55.1	55.4	57.6
23-Dec-24	54.3	59.7	55.8
24-Dec-24	54.9	59.5	55.7
25-Dec-24	52.0	57.8	54.8
26-Dec-24	58.6	55.7	54.9
27-Dec-24	59.8	58.7	56.6
28-Dec-24	56.0	54.6	53.3
29-Dec-24	55.0	58.7	54.7
30-Dec-24	56.0	58.6	55.0
31-Dec-24	58.5	57.7	58.2

Wellington International Airport
Managed Noise Service
Monthly Report for Dec 2024

Aircraft Operations

Operations Analysis
Dec 1, 2024 to Dec 31, 2024

Operation Type	Day	Night	Total
Arrival	3452	136	3588
Departure	3288	194	3482
Total	6740	330	7070

Jet	Day	Night	Total
A20N - Airbus A-320	51	55	106
A21N - Airbus A-321	64	1	65
A319 - Airbus - A319	2	0	2
A320 - Airbus - A320	1584	86	1670
B38M - Boeing 737 Max 8	27	1	28
B738 - Boeing - 737-800	210	70	280
B752 - Boeing - 757-200	2	0	2
BE40 - Beech - Beechjet 400/T-1 Jayhawk	1	1	2
C25A - Cessna Citation CJ2+	20	0	20
C25B - Cessna Citation CJ3 (twin-jet)	10	0	10
C510 - CESSNA CITIATION MUSTANG	20	0	20
C680 - CESSNA - 680 Citation Sovereign L2J/M	12	0	12
E50P - Embraer Phenom 100	2	0	2
FA50 - Dassault-Breguet - Falcon 50, Mystere 50 (T-16)	2	0	2
GA5C - Gulfstream Aerospace Gulfstream G500 (twin-jet)	2	0	2
GLF6 - Gulfstream G650	4	0	4
Total	2013	214	2227

Wellington International Airport
Managed Noise Service
Monthly Report for Dec 2024

Turboprop	Day	Night	Total
AT75 - Aerospatiale/Aeritalia - ATR-72-500	22	0	22
AT76 - Aerospatiale/Aeritalia - ATR-72-600	1021	17	1038
B350 - Beech - Super King Air 350	13	5	18
BE20 - Beech - Super King Air 200, 1300	306	23	329
BE9L - Beech - KingAir90, A90 to E90 (T-44, V-C6), Taurus 90	34	0	34
C208 - Cessna-Caravan 1-208,(Super) Cargomaster, Grand Caravan (U27)	710	45	755
DH8C - Dehavilland - Dash 8, DHC8 - 300	1788	0	1788
JS31 - British Aerospace-BAe-3100 Jetstream 31	16	0	16
JS32 - British Aerospace-BAe-3200 Jetstream Super 31	68	0	68
PAY4 - Piper - Cheyenne 400	2	0	2
PC12 - Pilatus Flugzeugwerke Ag - PC-12	318	9	327
SF34 - Saab - SF-340	23	0	23
Total	4321	99	4420

Others	Day	Night	Total
A109 - AgustaWestland AW109	3	1	4
AS50 - Eurocopter AS350 Ecureuil	4	0	4
BK17 - MBB/Kawasaki BK 117	54	5	59
BN2P - Britten Norman - BN-2A/B Islander, Defender	14	0	14
C152 - Cessna - Cessna 152	21	0	21
C172 - Cessna - Skyhawk 172/Cutlass/Mescalero	30	0	30
DA40 - Diamond DA40	2	0	2
DA42 - DA-42 Diamond Twin Star	1	0	1
GA8 - GippsAero GA8 Airvan	70	0	70
M9 - Beretta M9	1	0	1
NH90 - NH90 Caiman	1	0	1
P28A - Piper - Cherokee, Archer, Warrior, Cadet, Cruiser (PA-28-140/150/151/160/161/180/181)	28	1	29
P8 - Boeing 737-800 Poseidon	2	0	2
PA34 - Piper - Seneca 2/3	2	0	2
PA38 - Piper - Tomahawk	46	0	46
PA44 - Piper - Seminole, Turbo Seminole	8	0	8
Unknown	119	10	129
Total	406	17	423

Category	Day	Night	Total
Jet	2013	214	2227
Turboprop	4321	99	4420
Other	406	17	423
Total	6740	330	7070

Wellington International Airport
Managed Noise Service
Monthly Report for Dec 2024

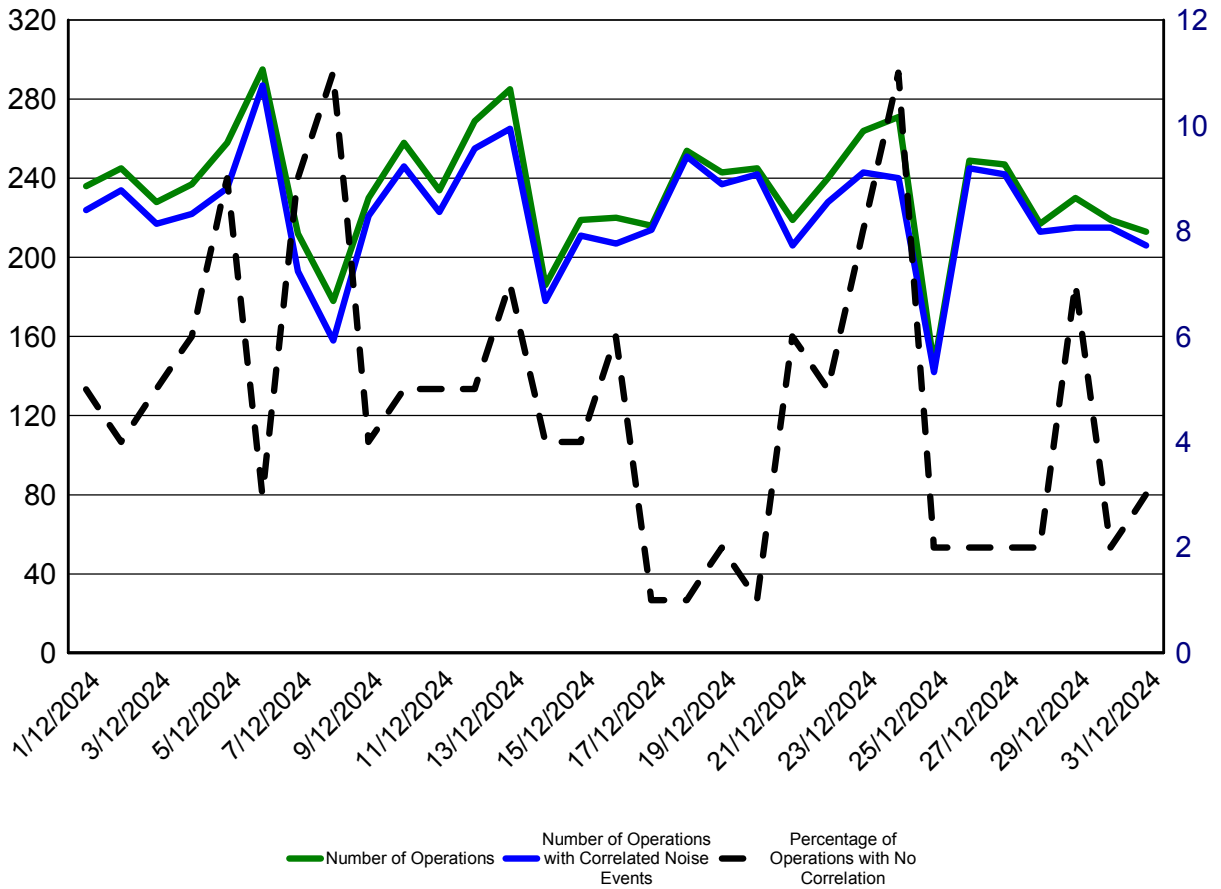
Uncorrelated Aircraft

Uncorrelated Aircraft Analysis
Dec 1, 2024 to Dec 31, 2024

Date	Number of Operations	Operations with Correlated Noise Events	Percentage of Operations With No Correlated Noise Events	Jets with No Correlated Noise Events
01-Dec-2024	236	224	5%	0
02-Dec-2024	245	234	4%	1
03-Dec-2024	228	217	5%	1
04-Dec-2024	237	222	6%	3
05-Dec-2024	258	235	9%	3
06-Dec-2024	295	287	3%	0
07-Dec-2024	212	193	9%	1
08-Dec-2024	178	158	11%	3
09-Dec-2024	230	221	4%	0
10-Dec-2024	258	246	5%	0
11-Dec-2024	234	223	5%	0
12-Dec-2024	269	255	5%	1
13-Dec-2024	285	265	7%	1
14-Dec-2024	186	178	4%	1
15-Dec-2024	219	211	4%	1
16-Dec-2024	220	207	6%	1
17-Dec-2024	216	214	1%	1
18-Dec-2024	254	251	1%	0
19-Dec-2024	243	237	2%	1
20-Dec-2024	245	242	1%	0
21-Dec-2024	219	206	6%	0
22-Dec-2024	240	228	5%	0
23-Dec-2024	264	243	8%	1
24-Dec-2024	271	240	11%	1
25-Dec-2024	145	142	2%	1
26-Dec-2024	249	245	2%	0
27-Dec-2024	247	242	2%	1
28-Dec-2024	217	213	2%	0
29-Dec-2024	230	215	7%	3
30-Dec-2024	219	215	2%	0
31-Dec-2024	213	206	3%	0

Wellington International Airport
 Managed Noise Service
 Monthly Report for Dec 2024

This graph shown below provides a summary of the noise correlation at Wellington Airport during December 2024



Wellington International Airport
Managed Noise Service
Monthly Report for Dec 2024

Calibration Report

	RMT 1			RMT 2			RMT 3		
	Measured	Diff.	Status	Measured	Diff.	Status	Measured	Diff.	Status
01-Dec-2024	88.3	0.2	SUCCESS	87.9	0.0	SUCCESS	88.5	-0.1	SUCCESS
02-Dec-2024	88.3	0.2	SUCCESS	88.0	0.1	SUCCESS	88.5	-0.1	SUCCESS
03-Dec-2024	88.3	0.2	SUCCESS	88.0	0.1	SUCCESS	88.5	-0.1	SUCCESS
04-Dec-2024	88.3	0.2	SUCCESS	88.1	0.2	SUCCESS	88.4	-0.2	SUCCESS
05-Dec-2024	88.3	0.2	SUCCESS	88.0	0.1	SUCCESS	88.4	-0.2	SUCCESS
06-Dec-2024	88.3	0.2	SUCCESS	88.0	0.1	SUCCESS	88.5	-0.1	SUCCESS
07-Dec-2024	88.3	0.2	SUCCESS	88.0	0.1	SUCCESS	88.5	-0.1	SUCCESS
08-Dec-2024	88.3	0.2	SUCCESS	88.0	0.1	SUCCESS	88.5	-0.1	SUCCESS
09-Dec-2024	88.4	0.3	SUCCESS	88.3	0.4	SUCCESS	88.5	-0.1	SUCCESS
10-Dec-2024	88.3	0.2	SUCCESS	88.0	0.1	SUCCESS	88.5	-0.1	SUCCESS
11-Dec-2024	88.3	0.2	SUCCESS	88.0	0.1	SUCCESS	88.5	-0.1	SUCCESS
12-Dec-2024	88.3	0.2	SUCCESS	88.0	0.1	SUCCESS	88.5	-0.1	SUCCESS
13-Dec-2024	88.3	0.2	SUCCESS	88.0	0.1	SUCCESS	88.5	-0.1	SUCCESS
14-Dec-2024	88.3	0.2	SUCCESS	88.0	0.1	SUCCESS	88.5	-0.1	SUCCESS
15-Dec-2024	88.3	0.2	SUCCESS	88.0	0.1	SUCCESS	88.5	-0.1	SUCCESS
16-Dec-2024	88.3	0.2	SUCCESS	88.0	0.1	SUCCESS	88.5	-0.1	SUCCESS
17-Dec-2024	88.3	0.2	SUCCESS	88.0	0.1	SUCCESS	88.4	-0.2	SUCCESS
18-Dec-2024	88.3	0.2	SUCCESS	88.0	0.1	SUCCESS	88.4	-0.2	SUCCESS
19-Dec-2024	88.3	0.2	SUCCESS	87.9	0.0	SUCCESS	88.5	-0.1	SUCCESS
20-Dec-2024	88.3	0.2	SUCCESS	88.0	0.1	SUCCESS	88.3	-0.3	SUCCESS
21-Dec-2024	88.3	0.2	SUCCESS	87.9	0.0	SUCCESS	88.4	-0.2	SUCCESS
22-Dec-2024	88.3	0.2	SUCCESS	88.0	0.1	SUCCESS	88.4	-0.2	SUCCESS
23-Dec-2024	88.3	0.2	SUCCESS	88.0	0.1	SUCCESS	88.3	-0.3	SUCCESS
24-Dec-2024	88.3	0.2	SUCCESS	88.0	0.1	SUCCESS	88.4	-0.2	SUCCESS
25-Dec-2024	88.3	0.2	SUCCESS	88.0	0.1	SUCCESS	88.4	-0.2	SUCCESS
26-Dec-2024	88.3	0.2	SUCCESS	87.9	0.0	SUCCESS	88.4	-0.2	SUCCESS
27-Dec-2024	88.3	0.2	SUCCESS	87.9	0.0	SUCCESS	88.4	-0.2	SUCCESS
28-Dec-2024	88.3	0.2	SUCCESS	87.9	0.0	SUCCESS	88.4	-0.2	SUCCESS
29-Dec-2024	88.3	0.2	SUCCESS	87.9	0.0	SUCCESS	88.4	-0.2	SUCCESS
30-Dec-2024	88.3	0.2	SUCCESS	88.0	0.1	SUCCESS	88.4	-0.2	SUCCESS
31-Dec-2024	88.3	0.2	SUCCESS	87.9	0.0	SUCCESS	88.4	-0.2	SUCCESS



WELLINGTON INTERNATIONAL
AIRPORT LIMITED

Managed Noise Service

Monthly Report: Jan 2025

Provided By: Envirosuite
Date: 06 February, 2025

Table of Contents

SUMMARY	3
AIRCRAFT LDN	4
AIRCRAFT OPERATIONS	5
UNCORRELATED AIRCRAFT	7
CALIBRATION REPORT	9

Summary

This report contains the information required by WIAL as part of the Envirosuite Managed Noise Service Agreement. The month of January saw data collected from all three RMTs with exceptions as follows:

NMT 1,2,3 incomplete hourly data on 30 January 2025 due to swap out of bk units to 3710. HUB#18954009

*NMT 1 missed whole hourly record between 30-Jan-2025 01:00 - 30-Jan-2025 13:59.

*NMT 2 missed whole hourly record between 30-Jan-2025 01:00 - 30-Jan-2025 10:59.

*NMT 3 missed whole hourly record between 30-Jan-2025 01:00 - 30-Jan-2025 12:59.

Note: Between the 30th January - 31st January 2025, the Percentage of Operations With No Correlated Noise Events are higher than other days due to incomplete hourly data caused by the bk swapout to 3710 on the 30th January 2025. Additionally the 31st January 2025, high percentage is due to the thresholds not being adjusted to the optimal level. Threshold updated on the 6th January 2025 and will following review to achieve optimal correlation. HUB#19014591

Wellington International Airport
Managed Noise Service
Monthly Report for Jan 2025

Aircraft LDN

Daily LDN Table
Jan 1, 2025 to Jan 31, 2025

	RMT 1 Rongatai	RMT 2 Maupuia	RMT 3 Kekrenga
01-Jan-25	56.5	54.0	53.8
02-Jan-25	53.2	55.3	56.1
03-Jan-25	58.2	59.7	58.1
04-Jan-25	57.9	58.0	57.4
05-Jan-25	58.8	58.2	55.6
06-Jan-25	58.3	55.7	55.2
07-Jan-25	52.3	55.9	54.4
08-Jan-25	56.6	55.1	53.7
09-Jan-25	58.3	55.8	53.9
10-Jan-25	55.9	55.6	53.4
11-Jan-25	59.1	55.2	54.5
12-Jan-25	58.3	55.9	54.8
13-Jan-25	55.5	54.8	54.5
14-Jan-25	55.5	54.7	52.4
15-Jan-25	56.0	54.7	52.7
16-Jan-25	56.6	54.4	54.9
17-Jan-25	55.4	55.0	55.0
18-Jan-25	55.8	53.6	52.7
19-Jan-25	56.3	53.2	50.7
20-Jan-25	55.8	54.9	53.9
21-Jan-25	54.4	55.1	54.8
22-Jan-25	52.8	53.6	54.6
23-Jan-25	54.9	58.9	55.3
24-Jan-25	56.8	54.8	55.0
25-Jan-25	52.0	58.3	55.4
26-Jan-25	57.9	58.3	56.2
27-Jan-25	56.3	55.0	54.1
28-Jan-25	53.5	57.8	53.3
29-Jan-25	57.5	56.7	57.6
30-Jan-25	44.9	62.3	43.2
31-Jan-25	51.2	54.1	54.1

Wellington International Airport
Managed Noise Service
Monthly Report for Jan 2025

Aircraft Operations

Operations Analysis
Jan 1, 2025 to Jan 31, 2025

Operation Type	Day	Night	Total
Arrival	3206	148	3354
Departure	3098	189	3287
Total	6304	337	6641

Jet	Day	Night	Total
A20N - Airbus A-320	56	51	107
A21N - Airbus A-321	64	7	71
A320 - Airbus - A320	1437	69	1506
B38M - Boeing 737 Max 8	29	0	29
B737 - Boeing - 737-700	2	0	2
B738 - Boeing - 737-800	205	70	275
B752 - Boeing - 757-200	22	0	22
BE40 - Beech - Beechjet 400/T-1 Jayhawk	2	0	2
C25A - Cessna Citation CJ2+	17	2	19
C510 - CESSNA CITIATION MUSTANG	13	1	14
C680 - CESSNA - 680 Citation Sovereign L2J/M	2	0	2
F2TH - Dassault-Breguet - Falcon 2000	6	0	6
FA50 - Dassault-Breguet - Falcon 50, Mystere 50 (T-16)	2	0	2
LJ60 - Gates Learjet - Learjet 60	2	0	2
Total	1859	200	2059

Wellington International Airport
Managed Noise Service
Monthly Report for Jan 2025

Turboprop	Day	Night	Total
AT75 - Aerospatiale/Aeritalia - ATR-72-500	30	0	30
AT76 - Aerospatiale/Aeritalia - ATR-72-600	981	25	1006
B350 - Beech - Super King Air 350	8	0	8
BE20 - Beech - Super King Air 200, 1300	337	50	387
BE9L - Beech - KingAir90, A90 to E90 (T-44, V-C6), Taurus 90	65	2	67
C130 - Lockheed - Hercules, Spectre	2	0	2
C208 - Cessna-Caravan 1-208,(Super) Cargomaster, Grand Caravan (U27)	762	42	804
DH8C - Dehavilland - Dash 8, DHC8 - 300	1479	0	1479
JS31 - British Aerospace-BAe-3100 Jetstream 31	51	0	51
JS32 - British Aerospace-BAe-3200 Jetstream Super 31	42	0	42
P46T - Piper - Malibu Meridian	5	0	5
PAY4 - Piper - Cheyenne 400	4	0	4
PC12 - Pilatus Flugzeugwerke Ag - PC-12	107	1	108
SF34 - Saab - SF-340	39	0	39
Total	3912	120	4032

Others	Day	Night	Total
BE58 - Beech - Baron58,Foxstar	2	0	2
BK17 - MBB/Kawasaki BK 117	107	13	120
BN2A - BRITTEN-NORMAN BN2A Mk III Trislander	2	0	2
BN2P - Britten Norman - BN-2A/B Islander, Defender	20	0	20
C152 - Cessna - Cessna 152	9	0	9
C172 - Cessna - Skyhawk 172/Cutlass/Mescalero	36	0	36
C206 - Cessna - Stationair 6, Turbo Stationair 6	2	0	2
GA8 - GippsAero GA8 Airvan	95	0	95
M9 - Beretta M9	6	2	8
P28A - Piper - Cherokee, Archer, Warrior, Cadet, Cruiser (PA-28-140/150/151/160/161/180/181)	42	2	44
P8 - Boeing 737-800 Poseidon	1	0	1
PA32 - Piper - Cherokee Six, Lance, (Turbo) Saratoga	2	0	2
PA34 - Piper - Seneca 2/3	2	0	2
PA38 - Piper - Tomahawk	129	0	129
Unknown	78	0	78
Total	533	17	550

Category	Day	Night	Total
Jet	1859	200	2059
Turboprop	3912	120	4032
Other	533	17	550
Total	6304	337	6641

Wellington International Airport
Managed Noise Service
Monthly Report for Jan 2025

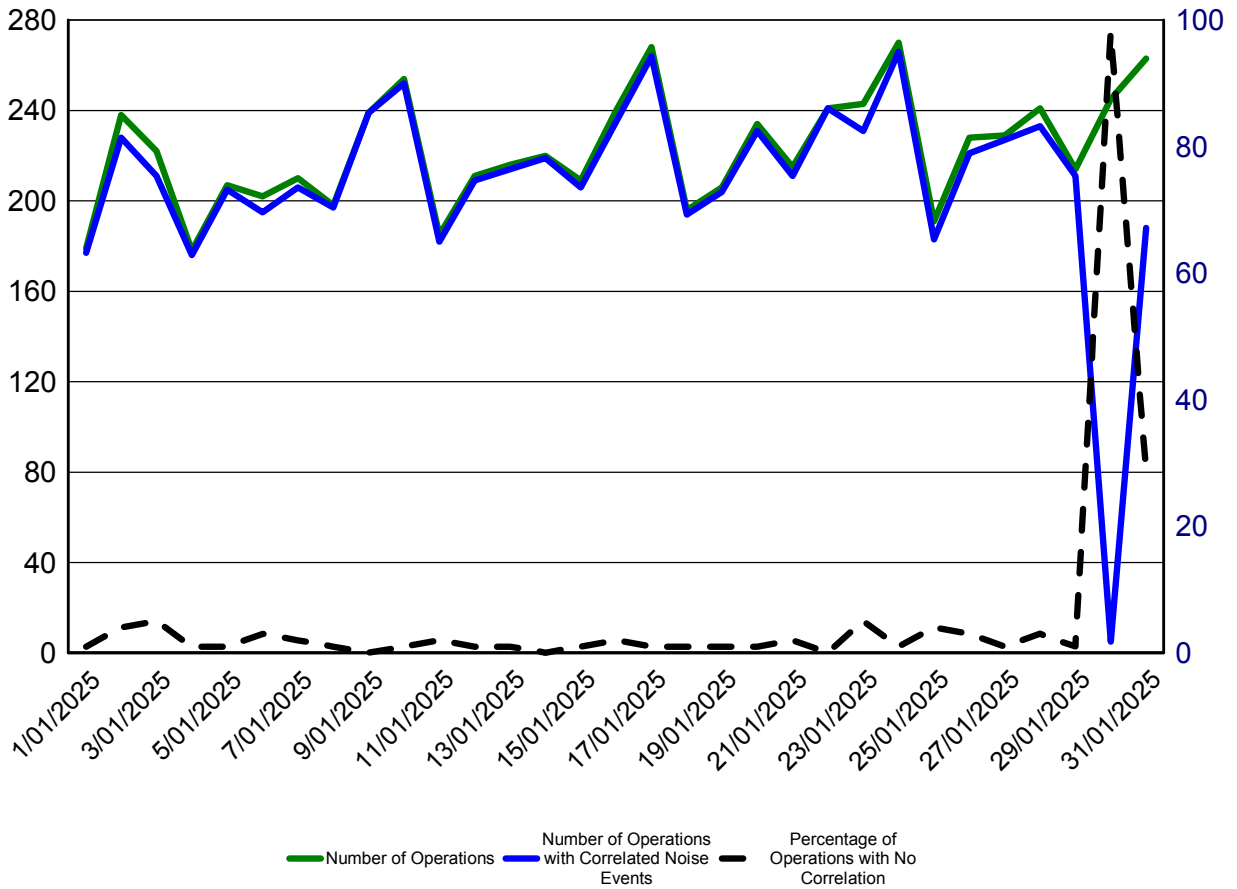
Uncorrelated Aircraft

Uncorrelated Aircraft Analysis
Jan 1, 2025 to Jan 31, 2025

Date	Number of Operations	Operations with Correlated Noise Events	Percentage of Operations With No Correlated Noise Events	Jets with No Correlated Noise Events
01-Jan-2025	179	177	1%	0
02-Jan-2025	238	228	4%	3
03-Jan-2025	222	211	5%	0
04-Jan-2025	178	176	1%	0
05-Jan-2025	207	205	1%	0
06-Jan-2025	202	195	3%	0
07-Jan-2025	210	206	2%	0
08-Jan-2025	198	197	1%	0
09-Jan-2025	239	239	0%	0
10-Jan-2025	254	252	1%	0
11-Jan-2025	185	182	2%	0
12-Jan-2025	211	209	1%	0
13-Jan-2025	216	214	1%	1
14-Jan-2025	220	219	0%	0
15-Jan-2025	209	206	1%	2
16-Jan-2025	240	235	2%	0
17-Jan-2025	268	264	1%	1
18-Jan-2025	196	194	1%	0
19-Jan-2025	206	204	1%	0
20-Jan-2025	234	231	1%	0
21-Jan-2025	215	211	2%	0
22-Jan-2025	241	241	0%	0
23-Jan-2025	243	231	5%	0
24-Jan-2025	270	266	1%	0
25-Jan-2025	191	183	4%	0
26-Jan-2025	228	221	3%	0
27-Jan-2025	229	227	1%	0
28-Jan-2025	241	233	3%	0
29-Jan-2025	214	211	1%	0
30-Jan-2025	245	5	98%	33
31-Jan-2025	263	188	29%	0

Wellington International Airport
 Managed Noise Service
 Monthly Report for Jan 2025

This graph shown below provides a summary of the noise correlation at Wellington Airport during January 2025



Wellington International Airport
Managed Noise Service
Monthly Report for Jan 2025

Calibration Report

	RMT 1			RMT 2			RMT 3		
	Measured	Diff.	Status	Measured	Diff.	Status	Measured	Diff.	Status
01-Jan-2025	88.3	0.2	SUCCESS	87.9	0.0	SUCCESS	88.4	-0.2	SUCCESS
02-Jan-2025	88.3	0.2	SUCCESS	88.0	0.1	SUCCESS	88.4	-0.2	SUCCESS
03-Jan-2025	88.3	0.2	SUCCESS	88.0	0.1	SUCCESS	88.3	-0.3	SUCCESS
04-Jan-2025	88.3	0.2	SUCCESS	88.0	0.1	SUCCESS	88.4	-0.2	SUCCESS
05-Jan-2025	88.3	0.2	SUCCESS	88.0	0.1	SUCCESS	88.3	-0.3	SUCCESS
06-Jan-2025	88.3	0.2	SUCCESS	88.0	0.1	SUCCESS	88.3	-0.3	SUCCESS
07-Jan-2025	88.3	0.2	SUCCESS	87.9	0.0	SUCCESS	88.4	-0.2	SUCCESS
08-Jan-2025	88.3	0.2	SUCCESS	88.0	0.1	SUCCESS	88.3	-0.3	SUCCESS
09-Jan-2025	88.3	0.2	SUCCESS	88.0	0.1	SUCCESS	88.4	-0.2	SUCCESS
10-Jan-2025	88.3	0.2	SUCCESS	88.0	0.1	SUCCESS	88.3	-0.3	SUCCESS
11-Jan-2025	88.3	0.2	SUCCESS	88.0	0.1	SUCCESS	88.4	-0.2	SUCCESS
12-Jan-2025	88.3	0.2	SUCCESS	87.9	0.0	SUCCESS	88.4	-0.2	SUCCESS
13-Jan-2025	88.3	0.2	SUCCESS	87.9	0.0	SUCCESS	88.4	-0.2	SUCCESS
14-Jan-2025	88.3	0.2	SUCCESS	87.9	0.0	SUCCESS	88.4	-0.2	SUCCESS
15-Jan-2025	88.3	0.2	SUCCESS	87.9	0.0	SUCCESS	88.4	-0.2	SUCCESS
16-Jan-2025	88.3	0.2	SUCCESS	87.9	0.0	SUCCESS	88.4	-0.2	SUCCESS
17-Jan-2025	88.3	0.2	SUCCESS	88.0	0.1	SUCCESS	88.4	-0.2	SUCCESS
18-Jan-2025	88.3	0.2	SUCCESS	88.0	0.1	SUCCESS	88.4	-0.2	SUCCESS
19-Jan-2025	88.3	0.2	SUCCESS	88.0	0.1	SUCCESS	88.4	-0.2	SUCCESS
20-Jan-2025	88.3	0.2	SUCCESS	87.9	0.0	SUCCESS	88.4	-0.2	SUCCESS
21-Jan-2025	88.3	0.2	SUCCESS	88.0	0.1	SUCCESS	88.4	-0.2	SUCCESS
22-Jan-2025	88.3	0.2	SUCCESS	88.0	0.1	SUCCESS	88.4	-0.2	SUCCESS
23-Jan-2025	88.3	0.2	SUCCESS	88.0	0.1	SUCCESS	88.5	-0.1	SUCCESS
24-Jan-2025	88.3	0.2	SUCCESS	87.9	0.0	SUCCESS	88.4	-0.2	SUCCESS
25-Jan-2025	88.3	0.2	SUCCESS	88.0	0.1	SUCCESS	88.4	-0.2	SUCCESS
26-Jan-2025	88.3	0.2	SUCCESS	88.0	0.1	SUCCESS	88.4	-0.2	SUCCESS
27-Jan-2025	88.3	0.2	SUCCESS	87.9	0.0	SUCCESS	88.4	-0.2	SUCCESS
28-Jan-2025	88.3	0.2	SUCCESS	88.0	0.1	SUCCESS	88.4	-0.2	SUCCESS
29-Jan-2025	88.4	0.3	SUCCESS	88.0	0.1	SUCCESS	88.5	-0.1	SUCCESS
30-Jan-2025	88.3	0.2	Success	87.9	0.0	Success	88.4	0.0	Success
31-Jan-2025	-36.4	0.0	Success	-36.5	0.0	Success	-36.8	0.0	Success



Wellington International Airport
Managed Noise Service
Monthly Report for Feb 2025



WELLINGTON INTERNATIONAL
AIRPORT LIMITED

Managed Noise Service

Monthly Report: Feb 2025

Provided By: Envirosuite
Date: 07 March, 2025



Table of Contents

SUMMARY	3
AIRCRAFT LDN	4
AIRCRAFT OPERATIONS	5
UNCORRELTATED AIRCRAFT	7
CALIBRATION REPORT	9



Summary

This report contains the information required by WIAL as part of the Envirosuite Managed Noise Service Agreement. The month of February saw data collected from all three RMTs.

Wellington International Airport
Managed Noise Service
Monthly Report for Feb 2025

Aircraft LDN

Daily LDN Table
Feb 1, 2025 to Feb 28, 2025

	RMT 1 Rongatai	RMT 2 Maupuia	RMT 3 Kekrenga
01-Feb-25	53.8	58.1	56.5
02-Feb-25	56.6	53.3	54.3
03-Feb-25	53.9	58.5	56.8
04-Feb-25	56.1	56.2	54.3
05-Feb-25	55.7	52.0	55.2
06-Feb-25	57.0	57.7	55.7
07-Feb-25	56.7	55.3	54.5
08-Feb-25	55.9	58.0	56.3
09-Feb-25	57.3	57.2	57.5
10-Feb-25	58.8	55.9	55.5
11-Feb-25	58.4	55.0	55.7
12-Feb-25	58.0	57.2	56.4
13-Feb-25	60.6	59.4	58.4
14-Feb-25	65.6	59.0	59.1
15-Feb-25	59.7	60.3	60.3
16-Feb-25	58.5	59.2	59.9
17-Feb-25	59.6	59.5	58.9
18-Feb-25	57.6	59.0	57.6
19-Feb-25	59.9	55.1	61.2
20-Feb-25	58.8	58.0	59.1
21-Feb-25	58.2	60.7	57.3
22-Feb-25	60.9	60.2	62.2
23-Feb-25	58.3	58.4	56.7
24-Feb-25	56.3	59.4	57.9
25-Feb-25	58.6	60.6	61.3
26-Feb-25	56.1	58.1	57.1
27-Feb-25	57.2	58.9	56.3
28-Feb-25	56.7	59.0	57.5

Wellington International Airport
Managed Noise Service
Monthly Report for Feb 2025

Aircraft Operations

Operations Analysis
Feb 1, 2025 to Feb 28, 2025

Operation Type	Day	Night	Total
Arrival	3213	130	3343
Departure	3081	194	3275
Total	6294	324	6618

Jet	Day	Night	Total
A20N - Airbus A-320	54	46	100
A21N - Airbus A-321	45	7	52
A320 - Airbus - A320	1572	76	1648
B38M - Boeing 737 Max 8	18	0	18
B738 - Boeing - 737-800	160	64	224
B752 - Boeing - 757-200	8	0	8
BE40 - Beech - Beechjet 400/T-1 Jayhawk	10	0	10
C25A - Cessna Citation CJ2+	24	0	24
C25B - Cessna Citation CJ3 (twin-jet)	8	0	8
C510 - CESSNA CITIATION MUSTANG	2	0	2
C560 - Cessna - Citation 5	5	0	5
C680 - CESSNA - 680 Citation Sovereign L2J/M	3	0	3
FA50 - Dassault-Breguet - Falcon 50, Mystere 50 (T-16)	4	0	4
GLEX - Bombardier GLOBAL EXPRESS/Sentinel	6	0	6
GLF6 - Gulfstream G650	2	0	2
LJ60 - Gates Learjet - Learjet 60	4	0	4
Total	1925	193	2118

Wellington International Airport
Managed Noise Service
Monthly Report for Feb 2025

Turboprop	Day	Night	Total
AT75 - Aerospatiale/Aeritalia - ATR-72-500	31	0	31
AT76 - Aerospatiale/Aeritalia - ATR-72-600	954	20	974
B350 - Beech - Super King Air 350	23	4	27
BE20 - Beech - Super King Air 200, 1300	305	27	332
BE9L - Beech - KingAir90, A90 to E90 (T-44, V-C6), Taurus 90	17	1	18
C208 - Cessna-Caravan 1-208,(Super) Cargomaster, Grand Caravan (U27)	709	43	752
C425 - Cessna - Corsair/Conquest I-425	2	0	2
CN35	1	0	1
DH8C - Dehavilland - Dash 8, DH8C - 300	1561	11	1572
JS31 - British Aerospace-BAe-3100 Jetstream 31	44	0	44
JS32 - British Aerospace-BAe-3200 Jetstream Super 31	61	0	61
P46T - Piper - Malibu Meridian	2	0	2
PC12 - Pilatus Flugzeugwerke Ag - PC-12	132	2	134
SF34 - Saab - SF-340	20	0	20
TEX2 - Beechcraft T-6A Texan II	4	0	4
Total	3866	108	3974

Others	Day	Night	Total
A109 - AgustaWestland AW109	4	0	4
BE36 - Beech - Bonanza 36	1	0	1
BE58 - Beech - Baron58,Foxstar	1	0	1
BK17 - MBB/Kawasaki BK 117	96	20	116
BN2A - BRITTEN-NORMAN BN2A Mk III Trislander	1	0	1
BN2P - Britten Norman - BN-2A/B Islander, Defender	18	0	18
C152 - Cessna - Cessna 152	11	0	11
C172 - Cessna - Skyhawk 172/Cutlass/Mescalero	54	0	54
C185 - Cessna - Skywagon 185 (U-17A/B)	6	0	6
C206 - Cessna - Stationair 6, Turbo Stationair 6	14	0	14
CJ6 - Nanchang CJ-6	10	0	10
DA40 - Diamond DA40	2	0	2
GA8 - GippsAero GA8 Airvan	64	1	65
HROC - Harmon Rocket	1	0	1
M9 - Beretta M9	6	0	6
NH90 - NH90 Caiman	2	0	2
P28A - Piper - Cherokee, Archer, Warrior, Cadet, Cruiser (PA-28-140/150/151/160/161/180/181)	32	1	33
P32R - Piper - Cherokee Lance PA-32R, Saratoga SP, Turbo Saratoga SP	2	0	2
PA34 - Piper - Seneca 2/3	18	0	18
PA38 - Piper - Tomahawk	137	1	138
PA44 - Piper - Seminole, Turbo Seminole	11	0	11
PA46 - Piper - Malibu, Malibu Mirage	4	0	4
R44 - Robinson R44 Raven	2	0	2
Unknown	6	0	6
Total	503	23	526

Category	Day	Night	Total
Jet	1925	193	2118
Turboprop	3866	108	3974
Other	503	23	526
Total	6294	324	6618

Wellington International Airport
Managed Noise Service
Monthly Report for Feb 2025

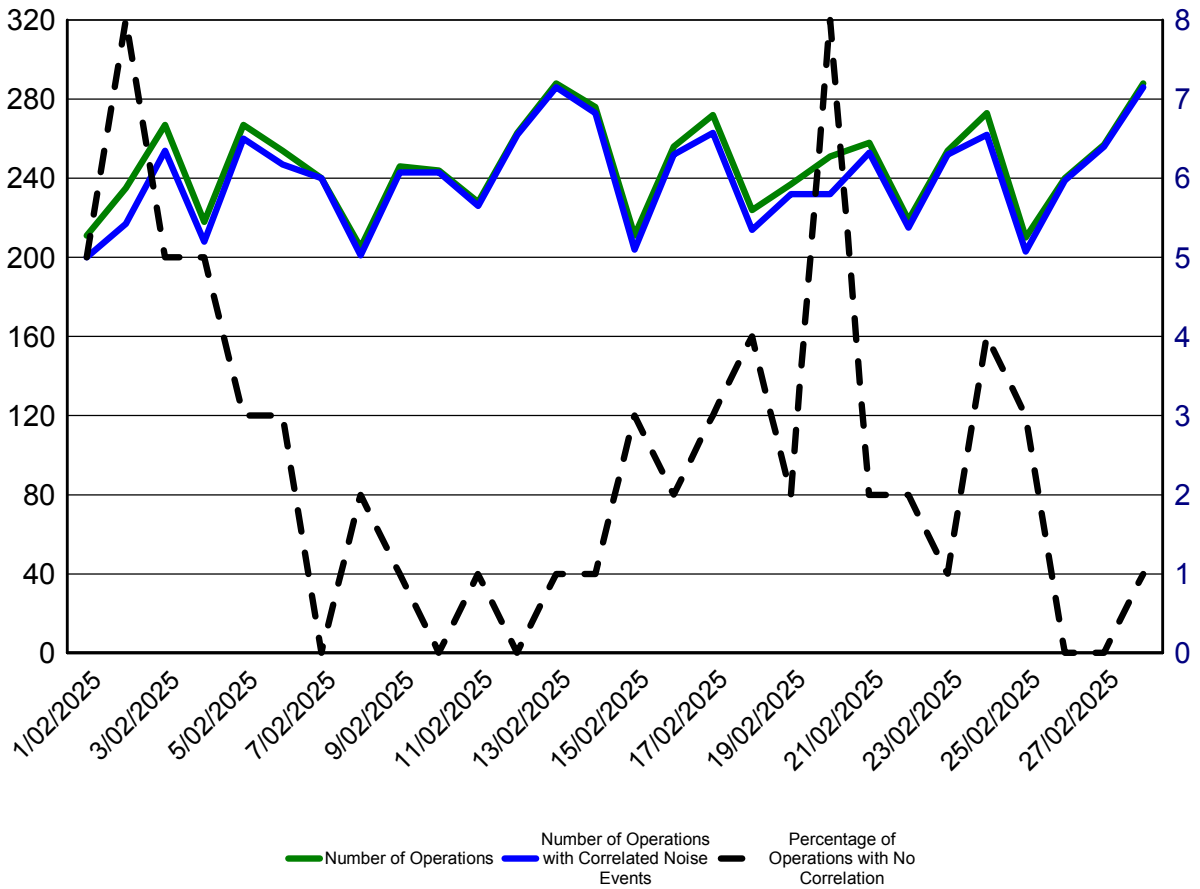
Uncorrelated Aircraft

Uncorrelated Aircraft Analysis
Feb 1, 2025 to Feb 28, 2025

Date	Number of Operations	Operations with Correlated Noise Events	Percentage of Operations With No Correlated Noise Events	Jets with No Correlated Noise Events
01-Feb-2025	211	200	5%	1
02-Feb-2025	235	217	8%	1
03-Feb-2025	267	254	5%	2
04-Feb-2025	218	208	5%	1
05-Feb-2025	267	260	3%	0
06-Feb-2025	254	247	3%	0
07-Feb-2025	240	240	0%	0
08-Feb-2025	205	201	2%	0
09-Feb-2025	246	243	1%	0
10-Feb-2025	244	243	0%	0
11-Feb-2025	228	226	1%	0
12-Feb-2025	263	262	0%	0
13-Feb-2025	288	286	1%	0
14-Feb-2025	276	273	1%	0
15-Feb-2025	211	204	3%	1
16-Feb-2025	256	252	2%	1
17-Feb-2025	272	263	3%	0
18-Feb-2025	224	214	4%	0
19-Feb-2025	237	232	2%	2
20-Feb-2025	251	232	8%	3
21-Feb-2025	258	253	2%	1
22-Feb-2025	219	215	2%	0
23-Feb-2025	254	252	1%	0
24-Feb-2025	273	262	4%	3
25-Feb-2025	210	203	3%	2
26-Feb-2025	240	239	0%	0
27-Feb-2025	257	256	0%	0
28-Feb-2025	288	286	1%	0

Wellington International Airport
 Managed Noise Service
 Monthly Report for Feb 2025

This graph shown below provides a summary of the noise correlation at Wellington Airport during February 2025



Wellington International Airport
Managed Noise Service
Monthly Report for Feb 2025

Calibration Report

	RMT 1			RMT 2			RMT 3		
	Measured	Diff.	Status	Measured	Diff.	Status	Measured	Diff.	Status
01-Feb-2025	-36.4	0.0	Success	-36.5	0.0	Success	-36.8	0.0	Success
02-Feb-2025	-36.4	0.0	Success	-36.5	0.0	Success	-36.7	0.0	Success
03-Feb-2025	-36.4	0.0	Success	-36.4	0.0	Success	-36.8	0.0	Success
04-Feb-2025	-36.4	0.0	Success	-36.4	0.0	Success	-36.8	0.0	Success
05-Feb-2025	-36.4	0.0	Success	-36.5	0.0	Success	-36.7	0.1	Success
06-Feb-2025	-36.4	0.0	Success	-36.5	0.0	Success	-36.8	0.0	Success
07-Feb-2025	-36.4	0.0	Success	-36.5	0.0	Success	-36.8	0.0	Success
08-Feb-2025	-36.4	0.0	Success	-36.5	0.0	Success	-36.8	0.0	Success
09-Feb-2025	-36.4	0.0	Success	-36.4	0.1	Success	-36.8	0.0	Success
10-Feb-2025	-36.4	0.0	Success	-36.4	0.0	Success	-36.8	0.0	Success
11-Feb-2025	-36.4	0.0	Success	-36.4	0.0	Success	-36.8	0.0	Success
12-Feb-2025	-36.4	0.0	Success	-36.4	0.0	Success	-36.8	0.0	Success
13-Feb-2025	-36.4	0.0	Success	-36.4	0.0	Success	-36.8	0.0	Success
14-Feb-2025	-36.4	0.0	Success	-36.4	0.0	Success	-36.8	0.0	Success
15-Feb-2025	-36.4	0.0	Success	-36.4	0.0	Success	-36.8	0.0	Success
16-Feb-2025	-36.4	0.0	Success	-36.5	0.0	Success	-36.8	0.0	Success
17-Feb-2025	-36.4	0.0	Success	-36.4	0.0	Success	-36.8	0.0	Success
18-Feb-2025	-36.4	0.0	Success	-36.4	0.1	Success	-36.8	0.0	Success
19-Feb-2025	-36.4	0.0	Success	0.0	0.0	Unknown	0.0	0.0	Unknown
20-Feb-2025	0.0	0.0	Unknown	0.0	0.0	Unknown	-36.7	0.0	Success
21-Feb-2025	-36.4	0.0	Success	0.0	0.0	Unknown	-36.7	0.0	Success
22-Feb-2025	-36.4	0.0	Success	-36.5	0.0	Success	-36.8	0.0	Success
23-Feb-2025	-36.4	0.0	Success	-36.4	0.0	Success	-36.8	0.0	Success
24-Feb-2025	-36.4	0.0	Success	-36.5	0.0	Success	-36.8	0.0	Success
25-Feb-2025	-36.4	0.0	Success	-36.4	0.0	Success	-36.8	0.0	Success
26-Feb-2025	-36.4	0.0	Success	-36.5	0.0	Success	-36.8	0.0	Success
27-Feb-2025	-36.4	0.0	Success	-36.5	0.0	Success	-36.8	0.0	Success
28-Feb-2025	-36.4	0.0	Success	-36.5	0.0	Success	-36.8	0.0	Success