

Wellington Airport

Noise Compliance Reporting

September, October, November 2024

1. Noise Enquiries Received and Response
2. Noise Enquiries Graph
3. Curfew Movements Graph
4. Noise (Ldn) Compliance Graph
5. Monthly Monitoring Reports from Envirosuite Pty Limited

As reported to the
Air Noise Management Committee
9 December 2024

Noise Enquiries Summary *

Date	Time	Suburb	Query	Source / Action	Category
17/09/2024	8:22pm	Churton Park	Complained of unnecessary noisy intrusion of Flight CAP01 at 00:26 on 16 Sept	Replied explaining that this was a Life Flight Trust Helicopter a medical emergency aircraft that is excluded from curfew and noise limits.	SIN
11/10/2024	11:33am	Wainuiomata	Complained of propeller planes flying over the east side of the harbour and making a lot of noise during night hours.	Explained that if an aircraft is flying in accordance with all CAA rules and regulations and within the normal flying hours for Wellington Airport, the Airport has absolutely no control or jurisdiction.	OVR
15/10/2024	7:22am	Ngaio	Enquired about Sounds Air flight flying too low (1300 ft).	Followed up with Airways to confirm compliance – airways responded stating that it was conducting a visual approach and therefore not covered by the noise abatement exemption for aircraft operating in accordance with promulgated IFR procedures. However, the altitude displayed at 1300ft is still within the tolerance we allow for. Have relayed this to complainant.	OVR
15/11/2024		Kaiwharawhara	Loud noise and vibration from overhead flight.	Flight was in accordance with CAA rules and Airport Curfew and therefore the Airport has no control or jurisdiction.	OVR
20/11/2024	4:16pm	Karaka Bays	Complaint about private (not rescue) Helicopter flying low over Miramar Peninsula various times during day	Reviewed webtrak. This helicopter (ZK-IAW) flew over the peninsula in breach of the Noise Abatement Procedures three times during the day. Sent email to Capital Jet Services to contact pilot to explain. No response received. Reported to CAA on 26/11/2024. Emailed complainant to let him know.	OVR/CAA
21/11/2024	9:05am	Hataitai	Aircraft flew very low over house in Hataitai at 9:05am. Gave complainant quite a fright.	Reviewed webtrak. It was an Air New Zealand A320 flight NZ681 to Dunedin which turned very early in breach of the Noise Abatement Procedures. Emailed Air New Zealand Ops team on 21/11. No response received. Reported to CAA on 26/11/2024	OVR/CAA
25/11/2024		Evans Bay	Complained that noise monitoring is flawed. Complained about WIALs rebranding and spend on projects and terminal upgrades and how WIAL will deal with community noise from increased flights.	Responded explaining (again) how noise is managed. Rules are in designation. Proud of brand and projects that are required to keep up with travel demand. Noise managed via Noise Management Plan. None of above is funded by rate payer money.	OTH

* Complaints relating to the new Divergent Missed Approach Flight Path (DMAFS) are recorded in a separate complaints register

GPU - GPU/APU use

MNT - WIAL Maintenance works

ENG - Engine testing

SIN - single noisy aircraft movement

CUR - airport movement during curfew hours

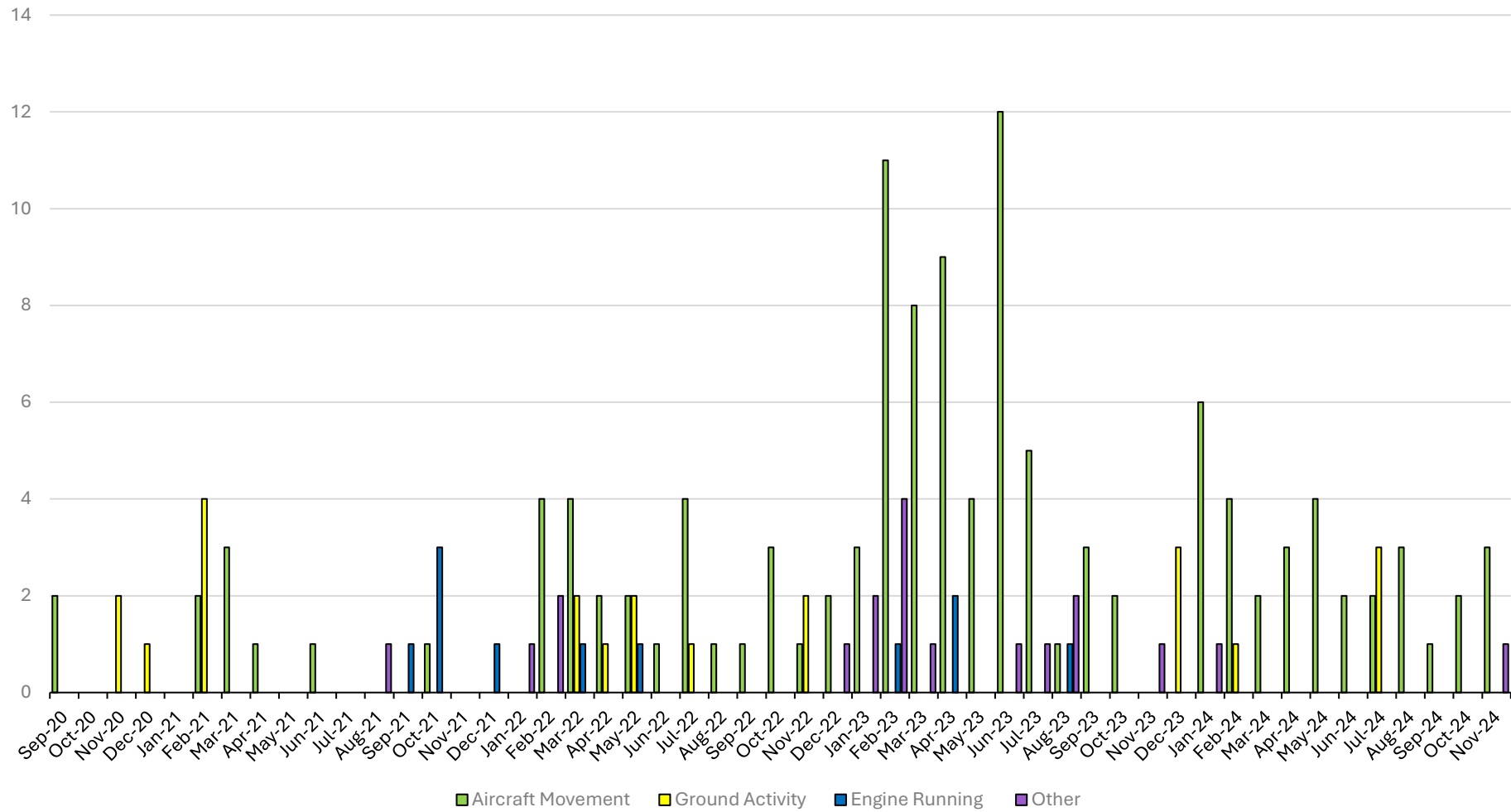
OVR - overflight/holding/circling aircraft

CAA - low flying/safety complaints

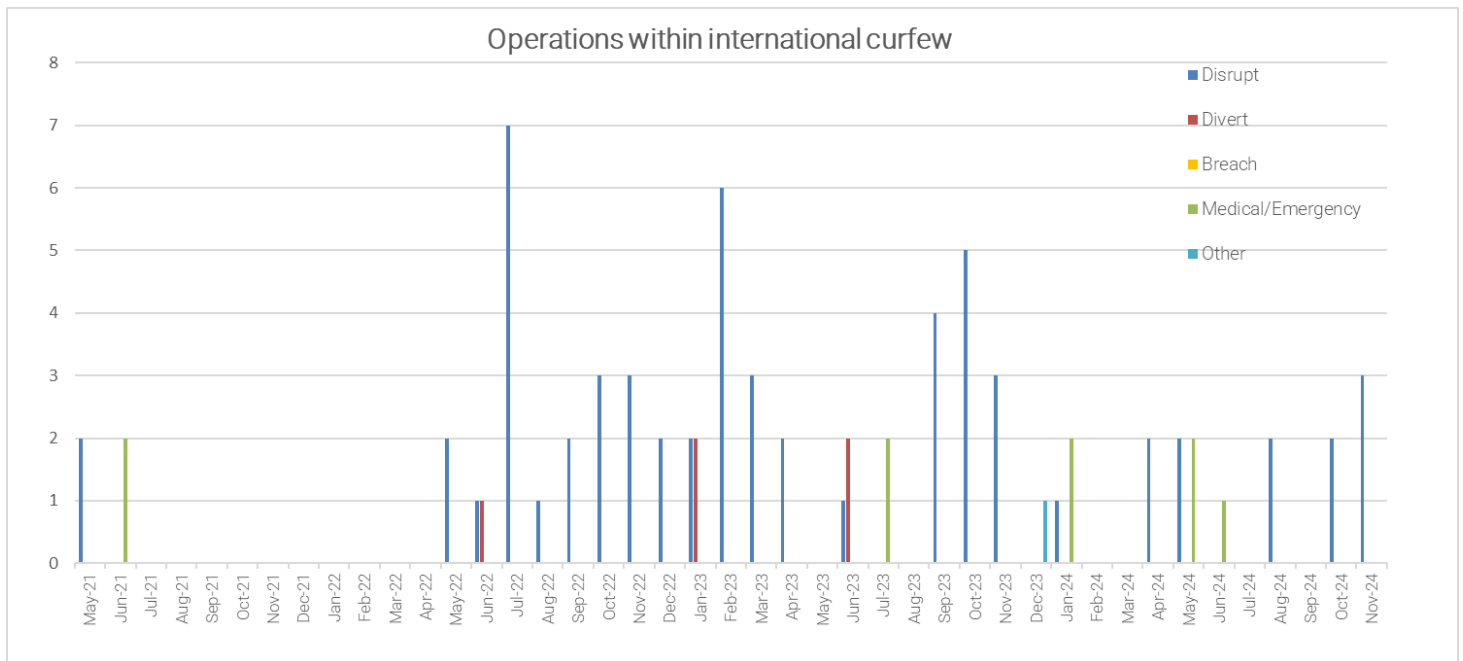
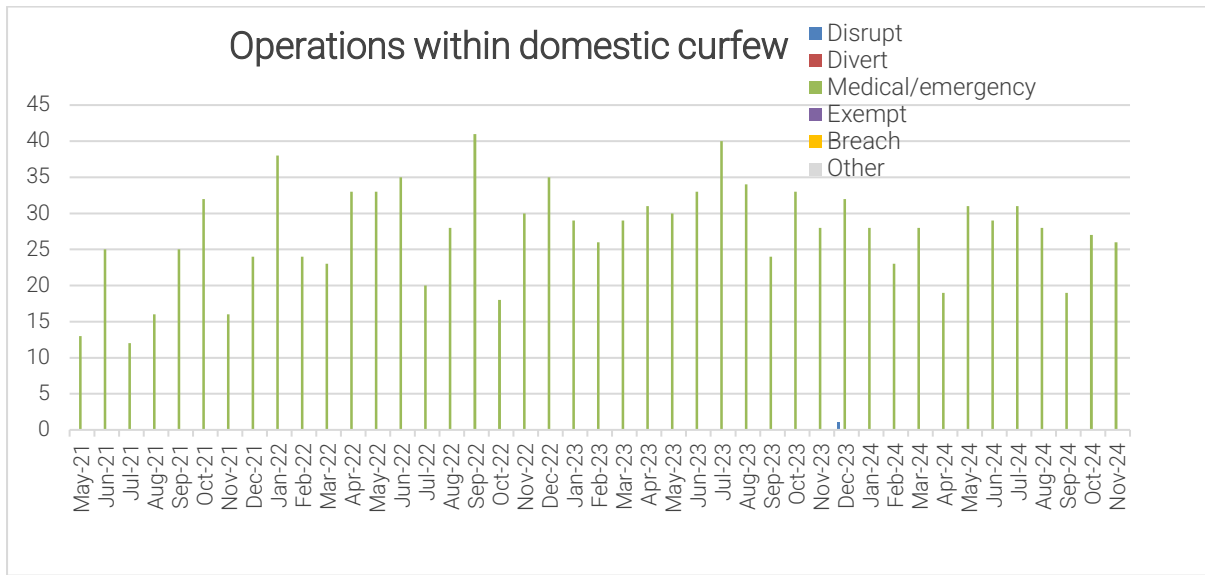
QRY - enquiries about rules etc

OTH - other feedback

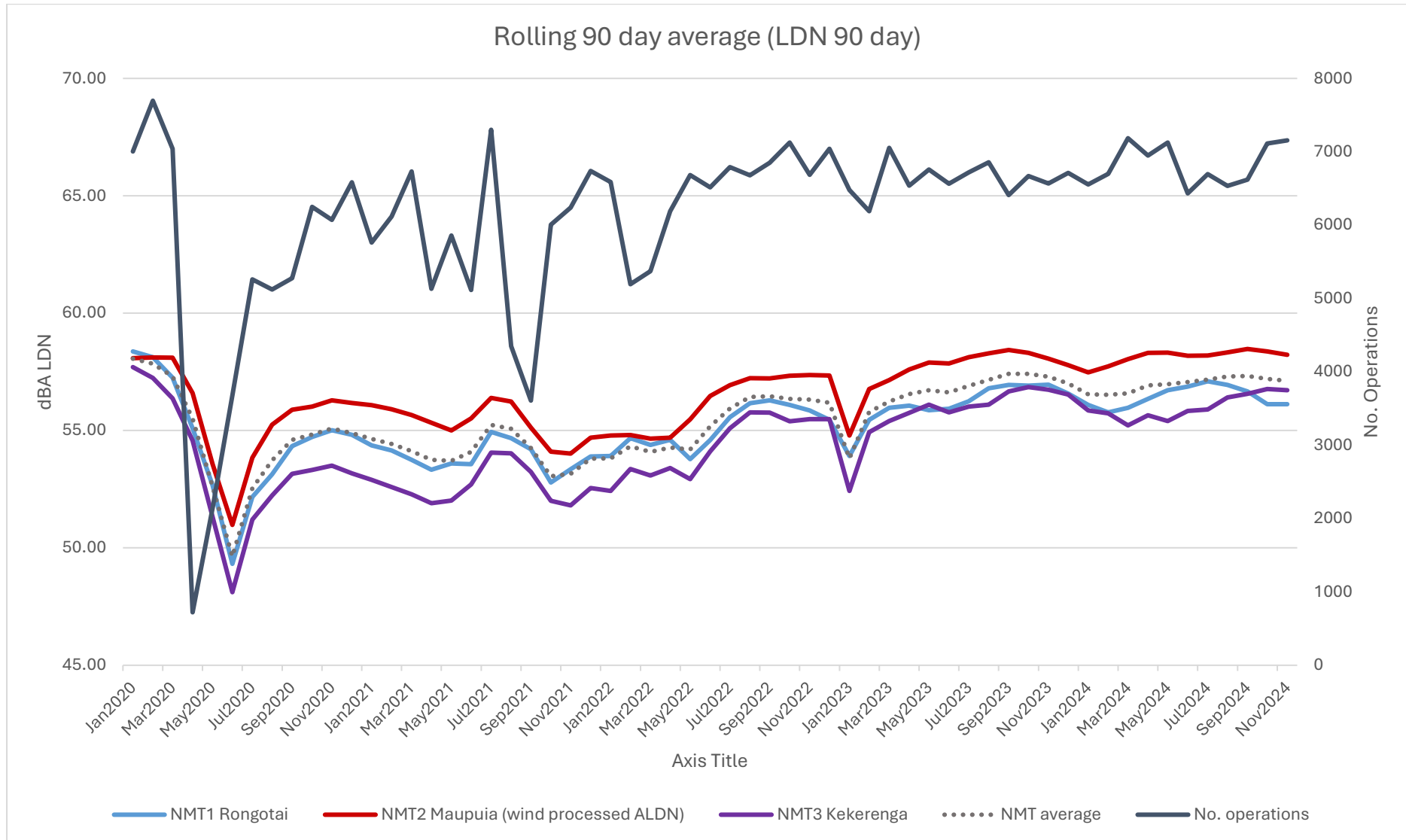
Noise Enquiries to end of November 2024



CURFEW GRAPHS



LDN COMPLIANCE GRAPH (as at November 2024)





Wellington International Airport
Managed Noise Service
Monthly Report for Sep 2024



WELLINGTON INTERNATIONAL
AIRPORT LIMITED

Managed Noise Service

Monthly Report: Sep 2024

Provided By: Envirosuite
Date: 30 September, 2024

Table of Contents

SUMMARY	3
AIRCRAFT LDN	4
AIRCRAFT OPERATIONS	5
UNCORRELATED AIRCRAFT	7
CALIBRATION REPORT	9



Wellington International Airport
Managed Noise Service
Monthly Report for Sep 2024

Summary

V@Á^] [|c&] cã • Á@Á { |{ aã } Á^~ a^a^ Á QŠÁ Á æó Á -Á@Á) çã [~ æ^ Á æ æ^ áÁ
P [ã^ Á^ çã^ Á^ { ^ } dV@Á [] c@Á -Á^] c { à^ Á æ Á aã& | ^ & c^ Á^ [{ Á^ Á^ Á^ ÜT V • Á
, æ^ Á^ c&] çã } • Á^ Á^ ||| , • K

ÜT VÁFÁ ç { æ^ } cã & {] | ^ c^ hourly á aã^ á^ c^ ^ } ÁFÁÜ^] c { à^ Á^ Á^ Á^ áÁHEÁ^] c { à^ Á^
GEG ÉPWÓÁFÍ Í È HÍ ÈÁFÍ Í G Í Í ÈÁFÍ Í Í Í È ÁFÍ Í Í Í Í ÈÁFÍ Í F H F H ÈÁFÍ Í G H F ÈÁ
ÁFÍ Í Í Í G ÈÁFÍ Í È HÍ È

*Missed whole hourly record between 01-Sep-2024 00:00 - 01-Sep-2024 00:59
PWÓÁFÍ Í JÍ H È
EMã • ^ áÁwhole @ ~ | ^ Á^ & [áÁnÁGÜÈ^] EGEG ÁEGÈÁFÍ È ÈÍ FÍ

ÜT VÁGÁ ç { æ^ } cã & {] | ^ c^ hourly á aã^ á^ c^ ^ } ÁFÁÜ^] c { à^ Á^ Á^ Á^ áÁHEÁ
Ü^] c { à^ Á^ Á^ ÉPWÓÁFÍ Í G Í Í ÈÁFÍ Í Í F FÍ ÈÁFÍ Í Í Í È FÁFÍ Í È FÍ ÈÁFÍ JHÍ FÍ È
EMã • ^ áÁwhole @ ~ | ^ Á^ & [áÁnÁGÜÈ^] EGEG ÁEGÈÁFÍ È ÈÍ FÍ

ÜT VÁHÁ ç { æ^ } cã & {] | ^ c^ hourly á aã^ á^ c^ ^ } ÁFÁÜ^] c { à^ Á^ Á^ Á^ áÁHEÁ
Ü^] c { à^ Á^ Á^ ÉPWÓÁ16526803, #16704397

- *Missed whole hourly record between 3-Sep-2024 05:00 - 04-Sep-2024 08:59.
HUB#16566951
- *Missed whole hourly record on 07-Sep-2024 04:00. HUB#16645205
- *Missed whole hourly record intermittently between 15-Sep-2024 07:00 - 23-Sep-2024 10:59.
HUB#16734726
- *Missed whole hourly record between 25-Sep-2024 03:00 - 25-Sep-2024 15:59.
HUB#16978627
- *Missed whole hourly record on 29-Sep-2024 02:00. HUB#17030514

Wellington International Airport
Managed Noise Service
Monthly Report for Sep 2024

Aircraft LDN

**Daily LDN Table
Sep 1, 2024 to Sep 30, 2024**

	RMT 1 Rongotai	RMT 2 Maupuia	RMT 3 Kekerenga
01-Sep-24	55.2	59.3	57.9
02-Sep-24	57.5	62.1	59.1
03-Sep-24	60.0	55.0	54.9
04-Sep-24	57.3	55.7	53.8
05-Sep-24	53.8	59.1	56.9
06-Sep-24	55.1	59.4	56.1
07-Sep-24	58.2	58.1	58.3
08-Sep-24	53.7	59.0	56.3
09-Sep-24	56.5	58.2	57.8
10-Sep-24	54.7	59.8	57.1
11-Sep-24	55.3	56.4	56.0
12-Sep-24	55.4	59.4	56.9
13-Sep-24	56.1	60.5	58.0
14-Sep-24	53.9	53.7	55.0
15-Sep-24	55.0	56.5	54.5
16-Sep-24	52.9	60.2	56.3
17-Sep-24	57.4	60.5	0.0
18-Sep-24	53.7	57.2	0.0
19-Sep-24	54.9	60.5	0.0
20-Sep-24	54.2	59.4	0.0
21-Sep-24	55.9	56.8	0.0
22-Sep-24	54.0	56.8	0.0
23-Sep-24	55.1	59.7	55.9
24-Sep-24	57.5	58.1	58.7
25-Sep-24	55.6	57.3	55.5
26-Sep-24	59.3	57.5	60.9
27-Sep-24	56.6	56.2	56.1
28-Sep-24	54.1	59.9	57.0
29-Sep-24	56.5	57.5	54.7
30-Sep-24	55.5	58.9	56.5

Wellington International Airport
Managed Noise Service
Monthly Report for Sep 2024

Aircraft Operations

Operations Analysis
Sep 1, 2024 to Sep 30, 2024

Operation Type	Day	Night	Total
Arrival	3242	132	3374
Departure	3070	177	3247
Total	6312	309	6621

Jet	Day	Night	Total
A20N - Airbus A-320	63	50	113
A21N - Airbus A-321	45	8	53
A320 - Airbus - A320	1610	81	1691
B38M - Boeing 737 Max 8	30	0	30
B738 - Boeing - 737-800	122	59	181
B752 - Boeing - 757-200	14	0	14
BE40 - Beech - Beechjet 400/T-1 Jayhawk	2	0	2
C25A - Cessna Citation CJ2+	20	1	21
C25B - Cessna Citation CJ3 (twin-jet)	3	0	3
C510 - CESSNA CITIATION MUSTANG	35	0	35
C560 - Cessna - Citation 5	2	0	2
C680 - CESSNA - 680 Citation Sovereign L2J/M	4	0	4
E190 - Embraer E190	52	0	52
FA50 - Dassault-Breguet - Falcon 50, Mystere 50 (T-16)	26	0	26
GLEX - Bombardier GLOBAL EXPRESS/Sentinel	4	0	4
GLF6 - Gulfstream G650	1	0	1
Total	2033	199	2232

Wellington International Airport
Managed Noise Service
Monthly Report for Sep 2024

Turboprop	Day	Night	Total
AT75 - Aerospatiale/Aeritalia - ATR-72-500	20	0	20
AT76 - Aerospatiale/Aeritalia - ATR-72-600	1004	17	1021
B350 - Beech - Super King Air 350	19	0	19
BE20 - Beech - Super King Air 200, 1300	299	29	328
BE9L - Beech - KingAir90, A90 to E90 (T-44, V-C6), Taurus 90	17	0	17
C208 - Cessna-Caravan 1-208,(Super) Cargomaster, Grand Caravan (U27)	571	43	614
DH8C - Dehavilland - Dash 8, DHC8 - 300	1683	0	1683
JS31 - British Aerospace-BAe-3100 Jetstream 31	16	0	16
JS32 - British Aerospace-BAe-3200 Jetstream Super 31	63	0	63
PC12 - Pilatus Flugzeugwerke Ag - PC-12	228	13	241
SF34 - Saab - SF-340	9	0	9
Total	3929	102	4031

Others	Day	Night	Total
BK17 - MBB/Kawasaki BK 117	47	2	49
BN2P - Britten Norman - BN-2A/B Islander, Defender	2	0	2
C152 - Cessna - Cessna 152	3	0	3
C172 - Cessna - Skyhawk 172/Cutlass/Mescalero	40	0	40
C173	1	0	1
C182 - Cessna - Skylane 182	1	0	1
CJ6 - Nanchang CJ-6	1	0	1
DA40 - Diamond DA40	7	0	7
DA42 - DA-42 Diamond Twin Star	2	0	2
EC20 - Eurocopter EC120 Colibri	1	0	1
GA8 - GippsAero GA8 Airvan	33	0	33
M9 - Beretta M9	3	0	3
NH90 - NH90 Caiman	1	0	1
P28A - Piper - Cherokee, Archer, Warrior, Cadet, Cruiser (PA-28-140/150/151/160/161/180/181)	28	0	28
P8 - Boeing 737-800 Poseidon	6	0	6
PA34 - Piper - Seneca 2/3	4	0	4
PA38 - Piper - Tomahawk	92	0	92
PA44 - Piper - Seminole, Turbo Seminole	10	0	10
SR22 - Cirrus - SR-22	4	0	4
Unknown	64	6	70
Total	350	8	358

Category	Day	Night	Total
Jet	2033	199	2232
Turboprop	3929	102	4031
Other	350	8	358
Total	6312	309	6621

Wellington International Airport
Managed Noise Service
Monthly Report for Sep 2024

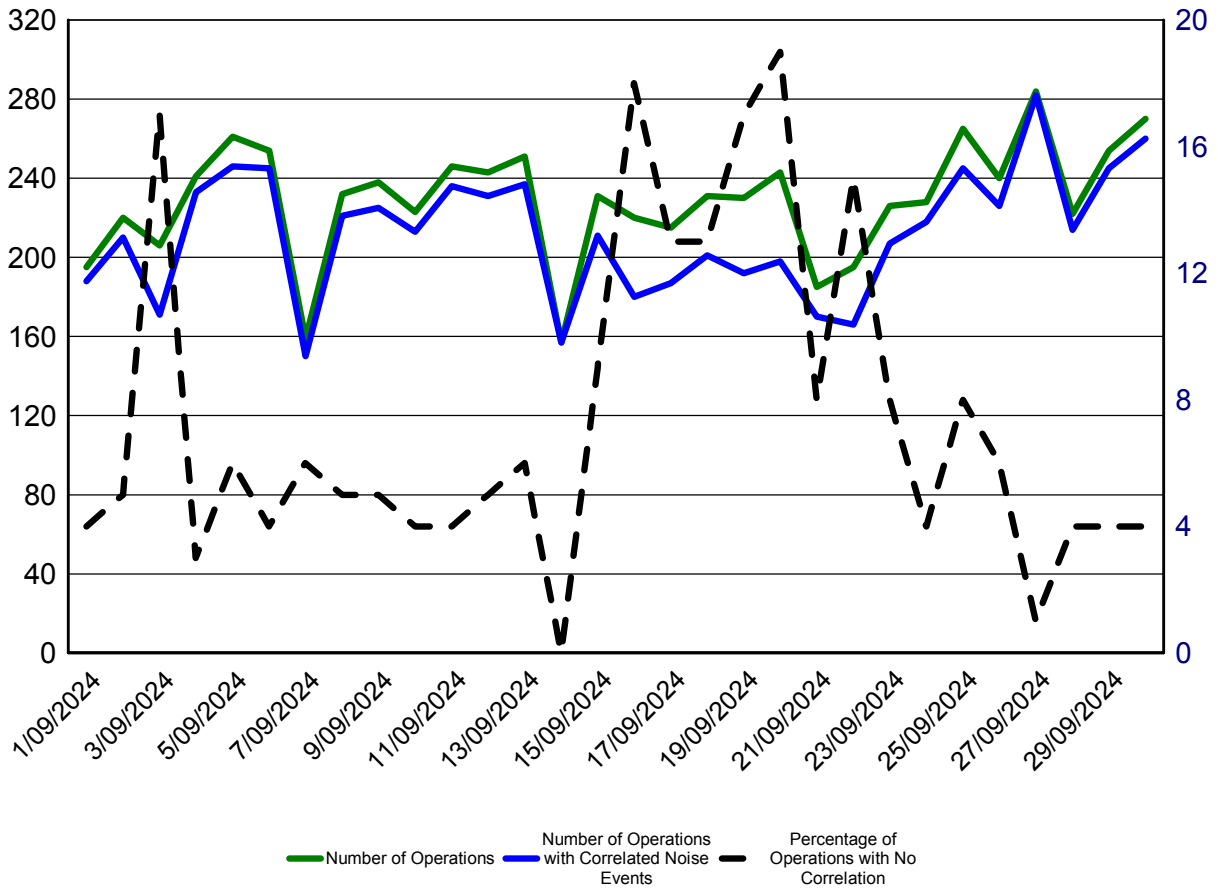
Uncorrelated Aircraft

Uncorrelated Aircraft Analysis
Sep 1, 2024 to Sep 30, 2024

Date	Number of Operations	Operations with Correlated Noise Events	Percentage of Operations With No Correlated Noise Events	Jets with No Correlated Noise Events
01-Sep-2024	195	188	4%	0
02-Sep-2024	220	210	5%	1
03-Sep-2024	206	171	17%	5
04-Sep-2024	241	233	3%	0
05-Sep-2024	261	246	6%	2
06-Sep-2024	254	245	4%	2
07-Sep-2024	159	150	6%	1
08-Sep-2024	232	221	5%	1
09-Sep-2024	238	225	5%	0
10-Sep-2024	223	213	4%	2
11-Sep-2024	246	236	4%	4
12-Sep-2024	243	231	5%	4
13-Sep-2024	251	237	6%	2
14-Sep-2024	157	157	0%	0
15-Sep-2024	231	211	9%	3
16-Sep-2024	220	180	18%	9
17-Sep-2024	215	187	13%	5
18-Sep-2024	231	201	13%	5
19-Sep-2024	230	192	17%	5
20-Sep-2024	243	198	19%	4
21-Sep-2024	185	170	8%	2
22-Sep-2024	195	166	15%	4
23-Sep-2024	226	207	8%	1
24-Sep-2024	228	218	4%	0
25-Sep-2024	265	245	8%	2
26-Sep-2024	240	226	6%	3
27-Sep-2024	284	282	1%	0
28-Sep-2024	222	214	4%	0
29-Sep-2024	254	245	4%	4
30-Sep-2024	270	260	4%	0

Wellington International Airport
 Managed Noise Service
 Monthly Report for Sep 2024

This graph shown below provides a summary of the noise correlation at Wellington Airport during September 2024



Wellington International Airport
Managed Noise Service
Monthly Report for Sep 2024

Calibration Report

	RMT 1			RMT 2			RMT 3		
	Measured	Diff.	Status	Measured	Diff.	Status	Measured	Diff.	Status
01-Sep-2024	88.4	0.3	SUCCESS	88.1	0.2	SUCCESS	88.4	-0.2	SUCCESS
02-Sep-2024	88.3	0.2	SUCCESS	88.1	0.2	SUCCESS	88.4	-0.2	SUCCESS
03-Sep-2024	88.3	0.2	SUCCESS	88.1	0.2	SUCCESS	88.4	-0.2	SUCCESS
04-Sep-2024	88.3	0.2	SUCCESS	87.9	0.0	SUCCESS	88.4	-0.2	SUCCESS
05-Sep-2024	88.3	0.2	SUCCESS	88.0	0.1	SUCCESS	88.4	-0.2	SUCCESS
06-Sep-2024	88.3	0.2	SUCCESS	87.9	0.0	SUCCESS	88.4	-0.2	SUCCESS
07-Sep-2024	88.3	0.2	SUCCESS	88.0	0.1	SUCCESS	88.4	-0.2	SUCCESS
08-Sep-2024	88.3	0.2	SUCCESS	88.0	0.1	SUCCESS	88.4	-0.2	SUCCESS
09-Sep-2024	88.3	0.2	SUCCESS	88.0	0.1	SUCCESS	88.5	-0.1	SUCCESS
10-Sep-2024	88.3	0.2	SUCCESS	88.0	0.1	SUCCESS	88.5	-0.1	SUCCESS
11-Sep-2024	88.3	0.2	SUCCESS	87.9	0.0	SUCCESS	88.4	-0.2	SUCCESS
12-Sep-2024	88.3	0.2	SUCCESS	88.0	0.1	SUCCESS	88.5	-0.1	SUCCESS
13-Sep-2024	88.3	0.2	SUCCESS	88.0	0.1	SUCCESS	88.5	-0.1	SUCCESS
14-Sep-2024	88.3	0.2	SUCCESS	88.0	0.1	SUCCESS	88.5	-0.1	SUCCESS
15-Sep-2024	88.3	0.2	SUCCESS	87.9	0.0	SUCCESS	88.4	-0.2	SUCCESS
16-Sep-2024	88.3	0.2	SUCCESS	88.0	0.1	SUCCESS	88.3	-0.3	SUCCESS
17-Sep-2024	88.3	0.2	SUCCESS	88.0	0.1	SUCCESS	0.0	0.0	
18-Sep-2024	88.3	0.2	SUCCESS	87.9	0.0	SUCCESS	0.0	0.0	
19-Sep-2024	88.3	0.2	SUCCESS	88.0	0.1	SUCCESS	0.0	0.0	
20-Sep-2024	88.3	0.2	SUCCESS	88.0	0.1	SUCCESS	0.0	0.0	
21-Sep-2024	88.3	0.2	SUCCESS	88.0	0.1	SUCCESS	0.0	0.0	
22-Sep-2024	88.3	0.2	SUCCESS	88.0	0.1	SUCCESS	0.0	0.0	
23-Sep-2024	88.3	0.2	SUCCESS	88.0	0.1	SUCCESS	88.4	-0.2	SUCCESS
24-Sep-2024	88.3	0.2	SUCCESS	88.0	0.1	SUCCESS	88.5	-0.1	SUCCESS
25-Sep-2024	88.3	0.2	SUCCESS	88.0	0.1	SUCCESS	88.5	-0.1	SUCCESS
26-Sep-2024	88.3	0.2	SUCCESS	88.1	0.2	SUCCESS	88.5	-0.1	SUCCESS
27-Sep-2024	88.3	0.2	SUCCESS	88.1	0.2	SUCCESS	88.5	-0.1	SUCCESS
28-Sep-2024	88.3	0.2	SUCCESS	88.0	0.1	SUCCESS	88.5	-0.1	SUCCESS
29-Sep-2024	88.3	0.2	SUCCESS	87.9	0.0	SUCCESS	88.5	-0.1	SUCCESS
30-Sep-2024	88.3	0.2	SUCCESS	88.0	0.1	SUCCESS	88.5	-0.1	SUCCESS



Wellington International Airport
Managed Noise Service
Monthly Report for Oct 2024



WELLINGTON INTERNATIONAL
AIRPORT LIMITED

Managed Noise Service

Monthly Report: Oct 2024

Provided By: Envirosuite
Date: 02 November, 2024



Wellington International Airport
Managed Noise Service
Monthly Report for Oct 2024

Table of Contents

SUMMARY	3
AIRCRAFT LDN	4
AIRCRAFT OPERATIONS	5
UNCORRELATED AIRCRAFT	7
CALIBRATION REPORT	9

Wellington International Airport
Managed Noise Service
Monthly Report for Oct 2024

Summary

This report contains the information required by WIAL as part of the Envirosuite Managed Noise Service Agreement. The month of October saw data collected from all three RMTs with exceptions as follows:

RMT 1 intermittent incomplete hourly data between 1 October 2024 and 22 October 2024.

- *Missed whole hourly record on 6-Oct-2024 08:00. HUB#17140373
- *Missed whole hourly record between 16-Oct-2024 05:00 -17-Oct-2024 09:59. HUB# 17320867
- *Missed whole hourly record between 18-Oct-2024 10:00 -16:59. HUB#17358801
- *Missed whole hourly record between 20-Oct-2024 08:00 - 21-Oct-2024 10:59. HUB#17358801
- *Missed whole hourly record between 22-Oct-2024 04:00 - 22-Oct-2024 07:59. HUB#17673993

RMT 2 intermittent incomplete hourly data between 3 October 2024 and 22 October 2024.

- *Missed whole hourly record on 4-Oct-2024 16:00 - 07-Oct-2024 10:59. HUB#17121619
- *Missed whole hourly record between 15-Oct-2024 08:00 - 09:59. HUB #17276191
- *Missed whole hourly record between 20-Oct-2024 19:00 - 21-Oct-2024 10:59. #17358801

RMT 3 intermittent incomplete hourly data between 3 October 2024 and 22 October 2024.

- *Missed whole hourly record on 6-Oct-2024 08:00. HUB# 17140373
- *Missed whole hourly record on 14-Oct-2024 04:00. HUB# 17252188
- *Missed whole hourly record on 16-Oct-2024 05:00 - 06:59. HUB#17299679
- *Missed whole hourly record on 17-Oct-2024 11:00 - 18-Oct-2024 07:59. HUB#17322303
- *Missed whole hourly record on 20-Oct-2024 08:00 - 09:59.HUB#17358801
- *Missed whole hourly record on 22-Oct-2024 05:00 - 07:59. HUB#17358801

Wellington International Airport
Managed Noise Service
Monthly Report for Oct 2024

Aircraft LDN

Daily LDN Table
Oct 1, 2024 to Oct 31, 2024

	RMT 1 Rongotai	RMT 2 Maupuia	RMT 3 Kekerenga
01-Oct-24	55.5	58.1	57.0
02-Oct-24	55.2	59.5	56.2
03-Oct-24	55.4	56.0	54.3
04-Oct-24	56.1	55.4	55.3
05-Oct-24	53.6	0.0	54.6
06-Oct-24	55.1	0.0	57.5
07-Oct-24	56.3	57.5	58.9
08-Oct-24	57.0	57.3	58.3
09-Oct-24	54.7	60.0	57.7
10-Oct-24	57.9	55.9	54.7
11-Oct-24	54.9	60.0	56.4
12-Oct-24	53.5	56.5	53.1
13-Oct-24	58.5	54.9	54.1
14-Oct-24	58.6	58.5	56.3
15-Oct-24	57.5	55.3	54.9
16-Oct-24	0.0	55.1	50.8
17-Oct-24	53.5	56.7	55.1
18-Oct-24	56.1	59.3	54.4
19-Oct-24	53.7	57.9	56.3
20-Oct-24	56.5	59.1	56.4
21-Oct-24	55.5	58.1	54.9
22-Oct-24	53.2	58.0	51.8
23-Oct-24	55.5	58.8	57.2
24-Oct-24	60.0	48.2	60.9
25-Oct-24	59.8	49.3	60.7
26-Oct-24	55.3	58.3	57.1
27-Oct-24	52.4	56.4	53.9
28-Oct-24	53.6	59.2	56.7
29-Oct-24	57.9	59.2	59.2
30-Oct-24	54.9	59.0	55.9
31-Oct-24	56.2	59.2	57.7

Wellington International Airport
Managed Noise Service
Monthly Report for Oct 2024

Aircraft Operations

Operations Analysis
Oct 1, 2024 to Oct 31, 2024

Operation Type	Day	Night	Total
Arrival	3478	134	3612
Departure	3318	183	3501
Total	6796	317	7113

Jet	Day	Night	Total
A20N - Airbus A-320	67	53	120
A21N - Airbus A-321	44	2	46
A320 - Airbus - A320	1726	81	1807
B38M - Boeing 737 Max 8	24	0	24
B738 - Boeing - 737-800	144	59	203
B752 - Boeing - 757-200	12	0	12
C25A - Cessna Citation CJ2+	23	0	23
C25B - Cessna Citation CJ3 (twin-jet)	4	0	4
C510 - CESSNA CITIATION MUSTANG	13	0	13
C525 - Cessna - Citationjet C525	1	0	1
C680 - CESSNA - 680 Citation Sovereign L2J/M	6	0	6
CL60 - Canadair Bombardier - CL600/610 Challenger	2	0	2
E190 - Embraer E190	51	0	51
E50P - Embraer Phenom 100	2	0	2
FA50 - Dassault-Breguet - Falcon 50, Mystere 50 (T-16)	18	2	20
FA7X - Dassault Falcon 7X	0	1	1
GL7T - Bombardier BD-700 Global 7500	2	0	2
GLF5 - Gulfstream - Gulfstream 5	2	0	2
GLF6 - Gulfstream G650	1	0	1
LJ60 - Gates Learjet - Learjet 60	2	0	2
Total	2144	198	2342

Wellington International Airport
Managed Noise Service
Monthly Report for Oct 2024

Turboprop	Day	Night	Total
AT75 - Aerospatiale/Aeritalia - ATR-72-500	33	0	33
AT76 - Aerospatiale/Aeritalia - ATR-72-600	1054	20	1074
B350 - Beech - Super King Air 350	35	1	36
BE20 - Beech - Super King Air 200, 1300	345	29	374
BE9L - Beech - KingAir90, A90 to E90 (T-44, V-C6), Taurus 90	30	0	30
C130 - Lockheed - Hercules, Spectre	4	0	4
C208 - Cessna-Caravan 1-208,(Super) Cargomaster, Grand Caravan (U27)	647	42	689
C30J - C-130J Hercules	9	0	9
DH8C - Dehavilland - Dash 8, DH8C - 300	1743	0	1743
JS31 - British Aerospace-BAe-3100 Jetstream 31	14	0	14
JS32 - British Aerospace-BAe-3200 Jetstream Super 31	60	0	60
P46T - Piper - Malibu Meridian	2	0	2
PC12 - Pilatus Flugzeugwerke Ag - PC-12	326	13	339
SF34 - Saab - SF-340	21	0	21
Total	4323	105	4428

Others	Day	Night	Total
A109 - AgustaWestland AW109	1	0	1
BE58 - Beech - Baron58,Foxstar	2	0	2
BK17 - MBB/Kawasaki BK 117	29	8	37
BN2P - Britten Norman - BN-2A/B Islander, Defender	12	0	12
C152 - Cessna - Cessna 152	5	0	5
C172 - Cessna - Skyhawk 172/Cutlass/Mescalero	26	0	26
C206 - Cessna - Stationair 6, Turbo Stationair 6	2	0	2
DA42 - DA-42 Diamond Twin Star	6	0	6
GA8 - GippsAero GA8 Airvan	42	0	42
HELI	1	0	1
P28A - Piper - Cherokee, Archer, Warrior, Cadet, Cruiser (PA-28-140/150/151/160/161/180/181)	16	0	16
P68 - Partenavia Construzioni Aeronautiche SpA - P68/B/C/-TC,Victor, Observer/P68R	1	0	1
PA27 - Piper - Aztec. Turbo Aztec	3	0	3
PA34 - Piper - Seneca 2/3	5	0	5
PA38 - Piper - Tomahawk	98	0	98
PA44 - Piper - Seminole, Turbo Seminole	2	0	2
Unknown	78	6	84
Total	329	14	343

Category	Day	Night	Total
Jet	2144	198	2342
Turboprop	4323	105	4428
Other	329	14	343
Total	6796	317	7113

Wellington International Airport
Managed Noise Service
Monthly Report for Oct 2024

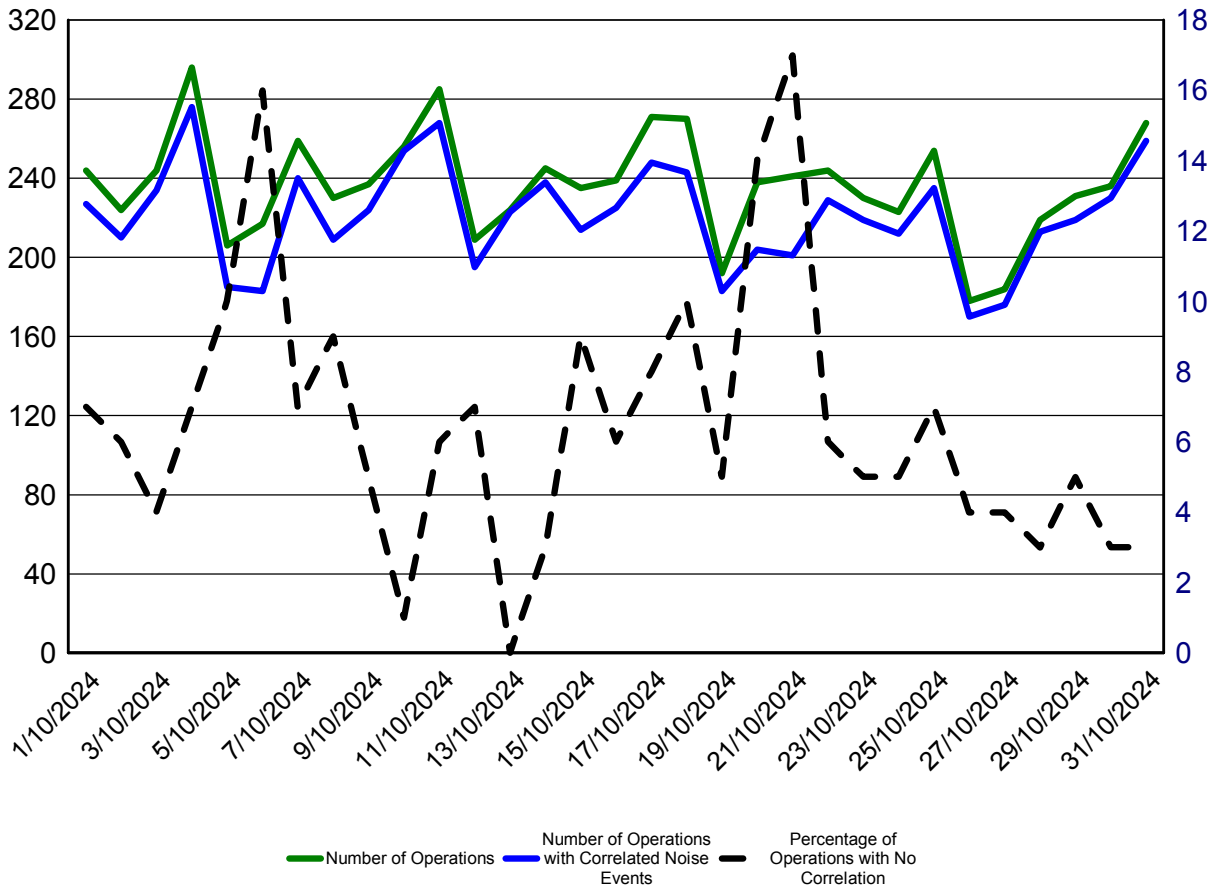
Uncorrelated Aircraft

Uncorrelated Aircraft Analysis
Oct 1, 2024 to Oct 31, 2024

Date	Number of Operations	Operations with Correlated Noise Events	Percentage of Operations With No Correlated Noise Events	Jets with No Correlated Noise Events
01-Oct-2024	244	227	7%	1
02-Oct-2024	224	210	6%	4
03-Oct-2024	244	234	4%	1
04-Oct-2024	296	276	7%	1
05-Oct-2024	206	185	10%	2
06-Oct-2024	217	183	16%	9
07-Oct-2024	259	240	7%	1
08-Oct-2024	230	209	9%	5
09-Oct-2024	237	224	5%	1
10-Oct-2024	256	254	1%	0
11-Oct-2024	285	268	6%	2
12-Oct-2024	209	195	7%	0
13-Oct-2024	224	223	0%	0
14-Oct-2024	245	238	3%	2
15-Oct-2024	235	214	9%	7
16-Oct-2024	239	225	6%	7
17-Oct-2024	271	248	8%	1
18-Oct-2024	270	243	10%	4
19-Oct-2024	192	183	5%	1
20-Oct-2024	238	204	14%	3
21-Oct-2024	241	201	17%	3
22-Oct-2024	244	229	6%	2
23-Oct-2024	230	219	5%	1
24-Oct-2024	223	212	5%	0
25-Oct-2024	254	235	7%	1
26-Oct-2024	178	170	4%	0
27-Oct-2024	184	176	4%	1
28-Oct-2024	219	213	3%	1
29-Oct-2024	231	219	5%	2
30-Oct-2024	236	230	3%	2
31-Oct-2024	268	259	3%	2

Wellington International Airport
 Managed Noise Service
 Monthly Report for Oct 2024

This graph shown below provides a summary of the noise correlation at Wellington Airport during October 2024



Wellington International Airport
Managed Noise Service
Monthly Report for Oct 2024

Calibration Report

	RMT 1			RMT 2			RMT 3		
	Measured	Diff.	Status	Measured	Diff.	Status	Measured	Diff.	Status
01-Oct-2024	88.3	0.2	SUCCESS	88.0	0.1	SUCCESS	88.5	-0.1	SUCCESS
02-Oct-2024	88.3	0.2	SUCCESS	88.0	0.1	SUCCESS	88.5	-0.1	SUCCESS
03-Oct-2024	88.3	0.2	SUCCESS	88.0	0.1	SUCCESS	88.5	-0.1	SUCCESS
04-Oct-2024	88.3	0.2	SUCCESS	87.9	0.0	SUCCESS	88.5	-0.1	SUCCESS
05-Oct-2024	88.3	0.2	SUCCESS	0.0	0.0		88.4	-0.2	SUCCESS
06-Oct-2024	88.3	0.2	SUCCESS	0.0	0.0		88.4	-0.2	SUCCESS
07-Oct-2024	88.3	0.2	SUCCESS	88.0	0.1	SUCCESS	88.4	-0.2	SUCCESS
08-Oct-2024	88.4	0.3	SUCCESS	88.1	0.2	SUCCESS	88.4	-0.2	SUCCESS
09-Oct-2024	88.3	0.2	SUCCESS	88.0	0.1	SUCCESS	88.4	-0.2	SUCCESS
10-Oct-2024	88.3	0.2	SUCCESS	87.9	0.0	SUCCESS	88.5	-0.1	SUCCESS
11-Oct-2024	88.3	0.2	SUCCESS	88.0	0.1	SUCCESS	88.5	-0.1	SUCCESS
12-Oct-2024	88.3	0.2	SUCCESS	88.0	0.1	SUCCESS	88.5	-0.1	SUCCESS
13-Oct-2024	88.3	0.2	SUCCESS	87.9	0.0	SUCCESS	88.5	-0.1	SUCCESS
14-Oct-2024	88.3	0.2	SUCCESS	88.0	0.1	SUCCESS	88.5	-0.1	SUCCESS
15-Oct-2024	88.3	0.2	SUCCESS	87.9	0.0	SUCCESS	88.5	-0.1	SUCCESS
16-Oct-2024	88.3	0.2	SUCCESS	88.0	0.1	SUCCESS	88.5	-0.1	SUCCESS
17-Oct-2024	88.3	0.2	SUCCESS	87.9	0.0	SUCCESS	88.4	-0.2	SUCCESS
18-Oct-2024	88.3	0.2	SUCCESS	87.9	0.0	SUCCESS	88.4	-0.2	SUCCESS
19-Oct-2024	88.3	0.2	SUCCESS	87.9	0.0	SUCCESS	88.5	-0.1	SUCCESS
20-Oct-2024	88.3	0.2	SUCCESS	88.0	0.1	SUCCESS	88.5	-0.1	SUCCESS
21-Oct-2024	88.3	0.2	SUCCESS	88.0	0.1	SUCCESS	88.5	-0.1	SUCCESS
22-Oct-2024	88.3	0.2	SUCCESS	87.9	0.0	SUCCESS	88.5	-0.1	SUCCESS
23-Oct-2024	88.3	0.2	SUCCESS	88.0	0.1	SUCCESS	88.5	-0.1	SUCCESS
24-Oct-2024	88.3	0.2	SUCCESS	88.2	0.3	SUCCESS	88.5	-0.1	SUCCESS
25-Oct-2024	88.3	0.2	SUCCESS	88.0	0.1	SUCCESS	88.7	0.1	SUCCESS
26-Oct-2024	88.3	0.2	SUCCESS	88.0	0.1	SUCCESS	88.4	-0.2	SUCCESS
27-Oct-2024	88.3	0.2	SUCCESS	88.0	0.1	SUCCESS	88.4	-0.2	SUCCESS
28-Oct-2024	88.3	0.2	SUCCESS	87.9	0.0	SUCCESS	88.4	-0.2	SUCCESS
29-Oct-2024	88.3	0.2	SUCCESS	88.0	0.1	SUCCESS	88.4	-0.2	SUCCESS
30-Oct-2024	88.3	0.2	SUCCESS	87.9	0.0	SUCCESS	88.4	-0.2	SUCCESS
31-Oct-2024	88.3	0.2	SUCCESS	88.0	0.1	SUCCESS	88.4	-0.2	SUCCESS



WELLINGTON INTERNATIONAL
AIRPORT LIMITED

Managed Noise Service

Monthly Report: Nov 2024

Provided By: Envirosuite
Date: 02 December, 2024



Table of Contents

SUMMARY	3
AIRCRAFT LDN	4
AIRCRAFT OPERATIONS	5
UNCORRELATED AIRCRAFT	7
CALIBRATION REPORT	9

Summary

This report contains the information required by WIAL as part of the Envirosuite Managed Noise Service Agreement. The month of November saw all data collected from all three RMTs.

Wellington International Airport
Managed Noise Service
Monthly Report for Nov 2024

Aircraft LDN

Daily LDN Table
Nov 1, 2024 to Nov 30, 2024

	RMT 1 Rongotai	RMT 2 Maupuia	RMT 3 Kekerenga
01-Nov-24	57.5	59.9	58.8
02-Nov-24	55.0	59.0	56.2
03-Nov-24	56.5	56.5	54.5
04-Nov-24	57.0	59.7	58.3
05-Nov-24	56.4	59.9	57.6
06-Nov-24	52.8	55.6	54.9
07-Nov-24	54.8	57.8	56.2
08-Nov-24	58.4	59.3	59.6
09-Nov-24	57.5	55.9	59.1
10-Nov-24	54.0	55.7	55.5
11-Nov-24	56.7	59.2	56.3
12-Nov-24	52.7	55.4	54.8
13-Nov-24	55.2	59.1	57.0
14-Nov-24	55.9	59.6	57.6
15-Nov-24	58.5	59.6	58.3
16-Nov-24	57.4	55.2	54.6
17-Nov-24	56.1	54.1	54.3
18-Nov-24	56.1	59.3	56.4
19-Nov-24	55.0	58.9	56.2
20-Nov-24	57.0	55.5	58.2
21-Nov-24	57.7	60.7	56.4
22-Nov-24	55.8	57.6	55.8
23-Nov-24	53.0	53.2	53.6
24-Nov-24	54.7	57.1	55.5
25-Nov-24	55.6	59.7	57.2
26-Nov-24	55.2	59.5	55.4
27-Nov-24	54.7	59.7	56.0
28-Nov-24	57.8	60.6	60.1
29-Nov-24	57.0	55.2	54.2
30-Nov-24	55.4	53.6	52.2

Wellington International Airport
Managed Noise Service
Monthly Report for Nov 2024

Aircraft Operations

Operations Analysis
Nov 1, 2024 to Nov 30, 2024

Operation Type	Day	Night	Total
Arrival	3495	137	3632
Departure	3329	196	3525
Total	6824	333	7157

Jet	Day	Night	Total
A20N - Airbus A-320	64	47	111
A21N - Airbus A-321	40	0	40
A320 - Airbus - A320	1756	94	1850
B38M - Boeing 737 Max 8	24	0	24
B738 - Boeing - 737-800	200	64	264
B752 - Boeing - 757-200	4	0	4
C25A - Cessna Citation CJ2+	10	0	10
C510 - CESSNA CITIATION MUSTANG	10	0	10
C560 - Cessna - Citation 5	2	0	2
E50P - Embraer Phenom 100	8	0	8
F2TH - Dassault-Breguet - Falcon 2000	4	0	4
FA50 - Dassault-Breguet - Falcon 50, Mystere 50 (T-16)	6	0	6
FA7X - Dassault Falcon 7X	1	0	1
GLF5 - Gulfstream - Gulfstream 5	2	0	2
GLF6 - Gulfstream G650	2	0	2
Total	2133	205	2338

Wellington International Airport
Managed Noise Service
Monthly Report for Nov 2024

Turboprop	Day	Night	Total
AT75 - Aerospatiale/Aeritalia - ATR-72-500	30	0	30
AT76 - Aerospatiale/Aeritalia - ATR-72-600	1058	22	1080
B350 - Beech - Super King Air 350	17	5	22
BE20 - Beech - Super King Air 200, 1300	374	20	394
BE9L - Beech - KingAir90, A90 to E90 (T-44, V-C6), Taurus 90	8	0	8
C130 - Lockheed - Hercules, Spectre	2	0	2
C208 - Cessna-Caravan 1-208,(Super) Cargomaster, Grand Caravan (U27)	690	43	733
C30J - C-130J Hercules	4	0	4
DH8C - Dehavilland - Dash 8, DH8C - 300	1781	0	1781
JS31 - British Aerospace-BAe-3100 Jetstream 31	4	0	4
JS32 - British Aerospace-BAe-3200 Jetstream Super 31	52	0	52
PC12 - Pilatus Flugzeugwerke Ag - PC-12	297	14	311
SF34 - Saab - SF-340	34	2	36
TEX2 - Beechcraft T-6A Texan II	1	0	1
Total	4352	106	4458

Others	Day	Night	Total
AS50 - Eurocopter AS350 Ecureuil	2	0	2
BK17 - MBB/Kawasaki BK 117	17	3	20
BN2P - Britten Norman - BN-2A/B Islander, Defender	7	0	7
C152 - Cessna - Cessna 152	12	0	12
C172 - Cessna - Skyhawk 172/Cutlass/Mescalero	28	0	28
C206 - Cessna - Stationair 6, Turbo Stationair 6	8	0	8
C421 - Cessna - Golden Eagle 421	1	0	1
GA8 - GippsAero GA8 Airvan	54	1	55
M9 - Beretta M9	3	0	3
P28A - Piper - Cherokee, Archer, Warrior, Cadet, Cruiser (PA-28-140/150/151/160/161/180/181)	12	1	13
P32R - Piper - Cherokee Lance PA-32R, Saratoga SP, Turbo Saratoga SP	6	0	6
PA34 - Piper - Seneca 2/3	3	0	3
PA38 - Piper - Tomahawk	62	1	63
PA44 - Piper - Seminole, Turbo Seminole	10	0	10
SLG4	1	0	1
SR22 - Cirrus - SR-22	2	0	2
T206 - Cessna T206 Turbo Stationair	2	0	2
Unknown	109	16	125
Total	339	22	361

Category	Day	Night	Total
Jet	2133	205	2338
Turboprop	4352	106	4458
Other	339	22	361
Total	6824	333	7157

Wellington International Airport
Managed Noise Service
Monthly Report for Nov 2024

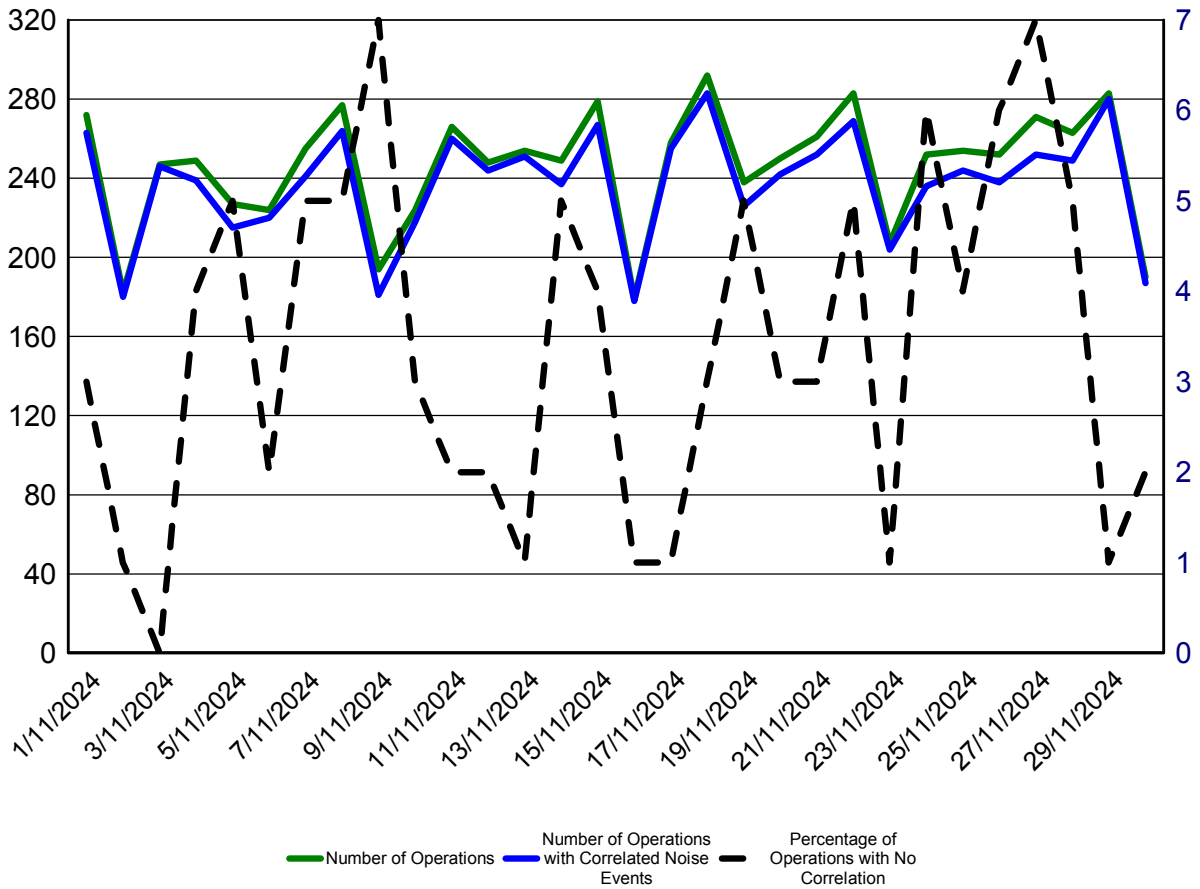
Uncorrelated Aircraft

Uncorrelated Aircraft Analysis
Nov 1, 2024 to Nov 30, 2024

Date	Number of Operations	Operations with Correlated Noise Events	Percentage of Operations With No Correlated Noise Events	Jets with No Correlated Noise Events
01-Nov-2024	272	263	3%	0
02-Nov-2024	182	180	1%	1
03-Nov-2024	247	246	0%	0
04-Nov-2024	249	239	4%	0
05-Nov-2024	227	215	5%	2
06-Nov-2024	224	220	2%	0
07-Nov-2024	255	241	5%	2
08-Nov-2024	277	264	5%	0
09-Nov-2024	194	181	7%	1
10-Nov-2024	224	218	3%	1
11-Nov-2024	266	260	2%	0
12-Nov-2024	248	244	2%	1
13-Nov-2024	254	251	1%	1
14-Nov-2024	249	237	5%	1
15-Nov-2024	279	267	4%	3
16-Nov-2024	179	178	1%	1
17-Nov-2024	258	255	1%	0
18-Nov-2024	292	283	3%	0
19-Nov-2024	238	226	5%	0
20-Nov-2024	250	242	3%	0
21-Nov-2024	261	252	3%	0
22-Nov-2024	283	269	5%	1
23-Nov-2024	207	204	1%	0
24-Nov-2024	252	236	6%	1
25-Nov-2024	254	244	4%	0
26-Nov-2024	252	238	6%	0
27-Nov-2024	271	252	7%	0
28-Nov-2024	263	249	5%	1
29-Nov-2024	283	280	1%	1
30-Nov-2024	190	187	2%	0

Wellington International Airport
 Managed Noise Service
 Monthly Report for Nov 2024

This graph shown below provides a summary of the noise correlation at Wellington Airport during November 2024



Wellington International Airport
Managed Noise Service
Monthly Report for Nov 2024

Calibration Report

	RMT 1			RMT 2			RMT 3		
	Measured	Diff.	Status	Measured	Diff.	Status	Measured	Diff.	Status
01-Nov-2024	88.3	0.2	SUCCESS	88.0	0.1	SUCCESS	88.5	-0.1	SUCCESS
02-Nov-2024	88.3	0.2	SUCCESS	88.0	0.1	SUCCESS	88.5	-0.1	SUCCESS
03-Nov-2024	88.3	0.2	SUCCESS	88.0	0.1	SUCCESS	88.5	-0.1	SUCCESS
04-Nov-2024	88.3	0.2	SUCCESS	88.0	0.1	SUCCESS	88.5	-0.1	SUCCESS
05-Nov-2024	88.3	0.2	SUCCESS	88.0	0.1	SUCCESS	88.5	-0.1	SUCCESS
06-Nov-2024	88.3	0.2	SUCCESS	87.9	0.0	SUCCESS	88.4	-0.2	SUCCESS
07-Nov-2024	88.3	0.2	SUCCESS	88.0	0.1	SUCCESS	88.4	-0.2	SUCCESS
08-Nov-2024	88.3	0.2	SUCCESS	88.0	0.1	SUCCESS	88.4	-0.2	SUCCESS
09-Nov-2024	88.3	0.2	SUCCESS	88.0	0.1	SUCCESS	88.4	-0.2	SUCCESS
10-Nov-2024	88.3	0.2	SUCCESS	88.0	0.1	SUCCESS	88.4	-0.2	SUCCESS
11-Nov-2024	88.3	0.2	SUCCESS	88.0	0.1	SUCCESS	88.5	-0.1	SUCCESS
12-Nov-2024	88.3	0.2	SUCCESS	88.0	0.1	SUCCESS	88.4	-0.2	SUCCESS
13-Nov-2024	88.3	0.2	SUCCESS	88.0	0.1	SUCCESS	88.5	-0.1	SUCCESS
14-Nov-2024	88.3	0.2	SUCCESS	88.0	0.1	SUCCESS	88.5	-0.1	SUCCESS
15-Nov-2024	88.3	0.2	SUCCESS	88.0	0.1	SUCCESS	88.5	-0.1	SUCCESS
16-Nov-2024	88.3	0.2	SUCCESS	88.0	0.1	SUCCESS	88.4	-0.2	SUCCESS
17-Nov-2024	88.3	0.2	SUCCESS	87.9	0.0	SUCCESS	88.4	-0.2	SUCCESS
18-Nov-2024	88.3	0.2	SUCCESS	88.2	0.3	SUCCESS	88.4	-0.2	SUCCESS
19-Nov-2024	88.3	0.2	SUCCESS	88.0	0.1	SUCCESS	88.4	-0.2	SUCCESS
20-Nov-2024	88.3	0.2	SUCCESS	88.0	0.1	SUCCESS	88.5	-0.1	SUCCESS
21-Nov-2024	88.3	0.2	SUCCESS	88.0	0.1	SUCCESS	88.5	-0.1	SUCCESS
22-Nov-2024	88.3	0.2	SUCCESS	88.0	0.1	SUCCESS	88.5	-0.1	SUCCESS
23-Nov-2024	88.3	0.2	SUCCESS	87.9	0.0	SUCCESS	88.5	-0.1	SUCCESS
24-Nov-2024	88.3	0.2	SUCCESS	88.0	0.1	SUCCESS	88.5	-0.1	SUCCESS
25-Nov-2024	88.3	0.2	SUCCESS	88.0	0.1	SUCCESS	88.5	-0.1	SUCCESS
26-Nov-2024	88.3	0.2	SUCCESS	88.0	0.1	SUCCESS	88.5	-0.1	SUCCESS
27-Nov-2024	88.3	0.2	SUCCESS	87.9	0.0	SUCCESS	88.5	-0.1	SUCCESS
28-Nov-2024	88.3	0.2	SUCCESS	88.0	0.1	SUCCESS	88.5	-0.1	SUCCESS
29-Nov-2024	88.3	0.2	SUCCESS	88.0	0.1	SUCCESS	88.5	-0.1	SUCCESS
30-Nov-2024	88.3	0.2	SUCCESS	87.9	0.0	SUCCESS	88.5	-0.1	SUCCESS